



CG

CHRISTOPHER GUY

IN PARTNERSHIP WITH

*Nourison*







**CHRISTOPHER GUY**

A Collection of Luxurious Floor Coverings for All.

From the beginning, Nourison has built its reputation on creating beautiful, handcrafted rugs from the finest materials, and has partnered with numerous designers through the years who share that passion. Translating Christopher Guy's timelessly elegant designs into area rugs fits perfectly into that vision. In the Christopher Guy collection, his reputation for clean designs with an artistic flair shines through in each of these contemporary rugs, ranging from abstracts to floral and geometric patterns to simple, classic pieces that focus attention on beautifully textured natural materials.





## *THE FACE BEHIND THE NAME*

Christopher Guy Harrison first became inspired by the world of decorative style while growing up in the 1970s along the shorelines of the French Riviera. There Christopher became fascinated with the elegance intrinsic to French design, which he sees as "an effortless form that is beyond beauty."

In the years since then, a singular vision and uncompromising sense of style, along with an ongoing pursuit for elegance in every piece he designs, has driven Christopher to continually redefine the aesthetics of design. The result is a place at the forefront of the world's luxury furnishings market.

An international lifestyle allows Christopher to view the world through a critically constructive eye that draws inspiration from everything he admires, translating into design elements that form the bedrock of today's vast CG collection. Above all else, Christopher's unique work is characterized by elegance, which forms the DNA of each design and is central to the philosophy of the brand.



CHRISTOPHER GUY















INDEX

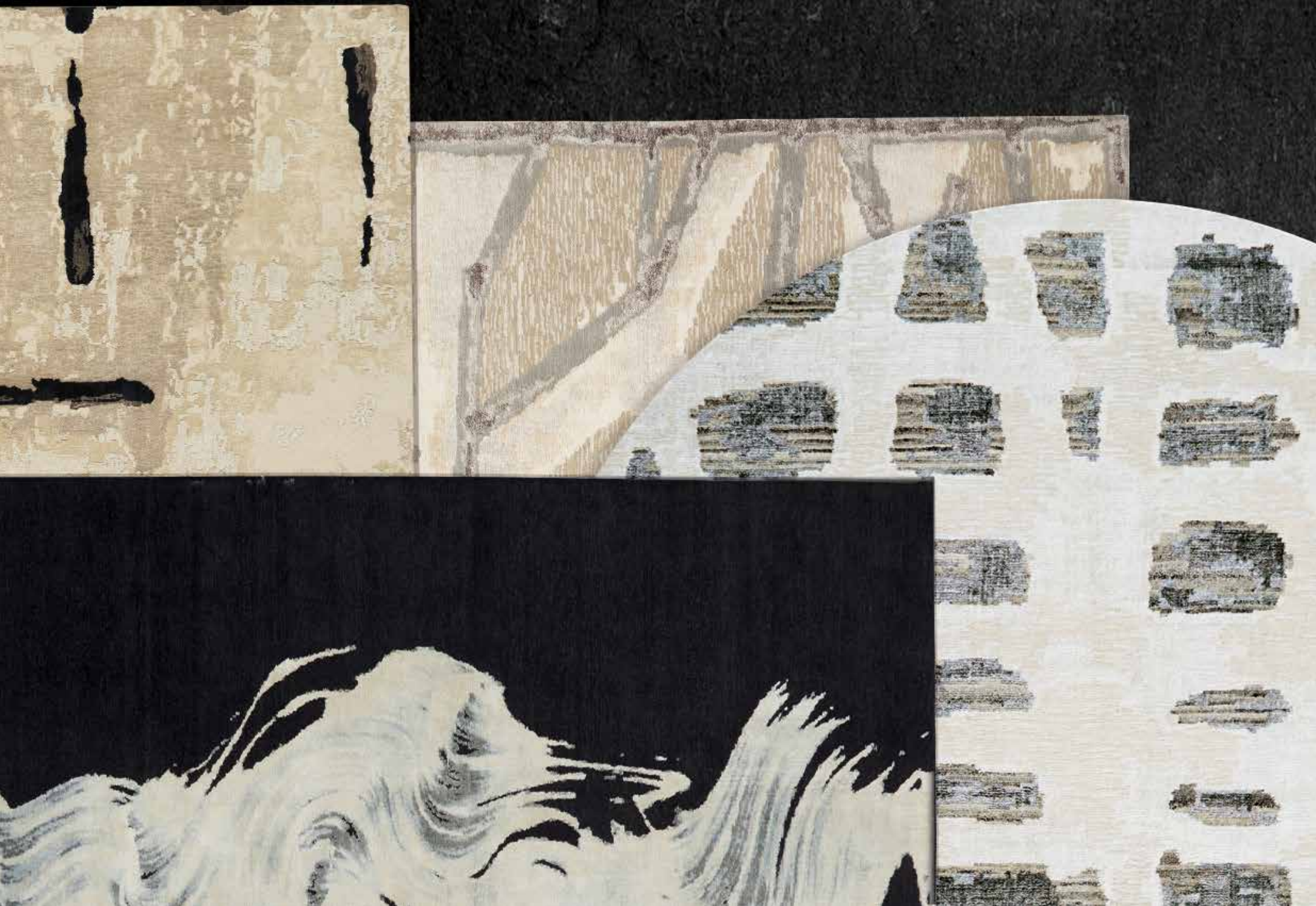
| SIZES/SHAPES    | 010 - 011 |
|-----------------|-----------|
| CGS01 AJMER     | 012 - 015 |
| CGS01 MDSND     | 016 - 019 |
| CGS04 ECRU      | 020 - 023 |
| CGS04 MDSND     | 024 - 027 |
| CGS05 SHALE     | 028 - 031 |
| CGS06 AJMER     | 032 - 035 |
| CGS09 SESND     | 036 - 039 |
| CGS10 MDSND     | 040 - 043 |
| CGS11 SESND     | 044 - 051 |
| CGS18 MDSND     | 052 - 055 |
| CGS19 SLVMN     | 056 - 059 |
| CGS20 MDSND     | 060 - 063 |
| CGS20 SNDSL     | 064 - 067 |
| CGS20 TOURM     | 068 - 071 |
| CGS21 NOIR      | 072 - 079 |
| CGS21 CHGRY     | 080 - 083 |
| CGS22 CHGRY     | 084 - 089 |
| CGS22 NOIR      | 090 - 093 |
| CGS23 RUBIO     | 094 - 097 |
| CGS24 PALOM     | 098 - 101 |
| CGS25 BIRCH     | 102 - 105 |
| CGS26 CHGRY     | 106 - 109 |
| CGS27 ZINC      | 110 - 113 |
| CGS28 BIRCH     | 114 - 117 |
| CGS29 ASH       | 118 - 121 |
| CGW05 MOCHA     | 122 - 127 |
| CGW05 NATRL     | 128 - 131 |
| CGW12 MARWT     | 132 - 135 |
| CGW16 EGGSH     | 136 - 141 |
| CGW16 SILVR     | 142 - 145 |
| CGM01 LUXUEX    | 146 - 149 |
| PILLOWS         | 150 - 155 |
| ROUND AREA RUGS | 156 - 161 |



“

To enhance the CG lifestyle collection there was a need for me to design beautiful rugs based on my own personal interpretation of how Coco Chanel's home may have looked if she were with us today. Nourison is a giant in our industry, whose craftsmanship and quality is second to none, and therefore the perfect partnership for Christopher Guy.

—CHRISTOPHER GUY



GROUP A & C

STANDARD SIZES

|               |              |
|---------------|--------------|
| 8 ft x 10 ft  | 244 x 305 cm |
| 9 ft x 12 ft  | 274 x 366 cm |
| 10 ft x 14 ft | 305 x 427 cm |

SPECIAL ORDER SIZES



|          |        |
|----------|--------|
| 8 ft SQ  | 244 cm |
| 12 ft SQ | 366 cm |



|               |              |
|---------------|--------------|
| 6 ft x 9 ft   | 183 x 274 cm |
| 12 ft x 15 ft | 366 x 457 cm |
| 12 ft x 18 ft | 366 x 549 cm |



|           |        |
|-----------|--------|
| 6 ft RND  | 183 cm |
| 8 ft RND  | 244 cm |
| 10 ft RND | 305 cm |
| 12 ft RND | 366 cm |

CUSTOM SIZES AVAILABLE







TRANQUILLITÉ AJMER 47-0028 | CGS01 AJMER  
NEW ZEALAND WOOL & SILK | TIBETAN WEAVE, HAND KNOTTED

GROUP A





8FT ROUND AREA RUG

Soft neutral tones  
seem to flow across  
the surface of this wool  
& silk rug, creating a  
feeling of peaceful  
movement.

NEW ZEALAND WOOL & SILK  
TIBETAN WEAVE  
HAND KNOTTED

TRANQUILLITÉ AJMER  
47-0028 | CGS01 AJMER

GROUP A













**TRANQUILLITÉ MEDITERRANEAN SAND 47-0028 | CGS01 MDSND**  
NEW ZEALAND WOOL & SILK | TIBETAN WEAVE, HAND KNOTTED

GROUP A





8FT ROUND AREA RUG

Soft gris tones with  
platinum and rich  
titanium are enhanced  
with ultra deep blue  
water shadowing in this  
wool & silk design.

**NEW ZEALAND WOOL & SILK  
TIBETAN WEAVE  
HAND KNOTTED**

**TRANQUILLITÉ MEDITERRANEAN SAND**  
47-0028 | CGS01 MDSND

**GROUP A**













DE STIJL ECRU 47-0019 | CGS04 ECRU  
NEW ZEALAND WOOL & SILK | TIBETAN WEAVE, HAND KNOTTED

GROUP A





8FT ROUND AREA RUG

Rich graphite and  
brown tones pepper  
this ecru rug,  
creating a truly  
cosmopolitan look.

NEW ZEALAND WOOL & SILK  
TIBETAN WEAVE  
HAND KNOTTED

DE STIJL ECRU  
47-0019 | CGS04 ECRU

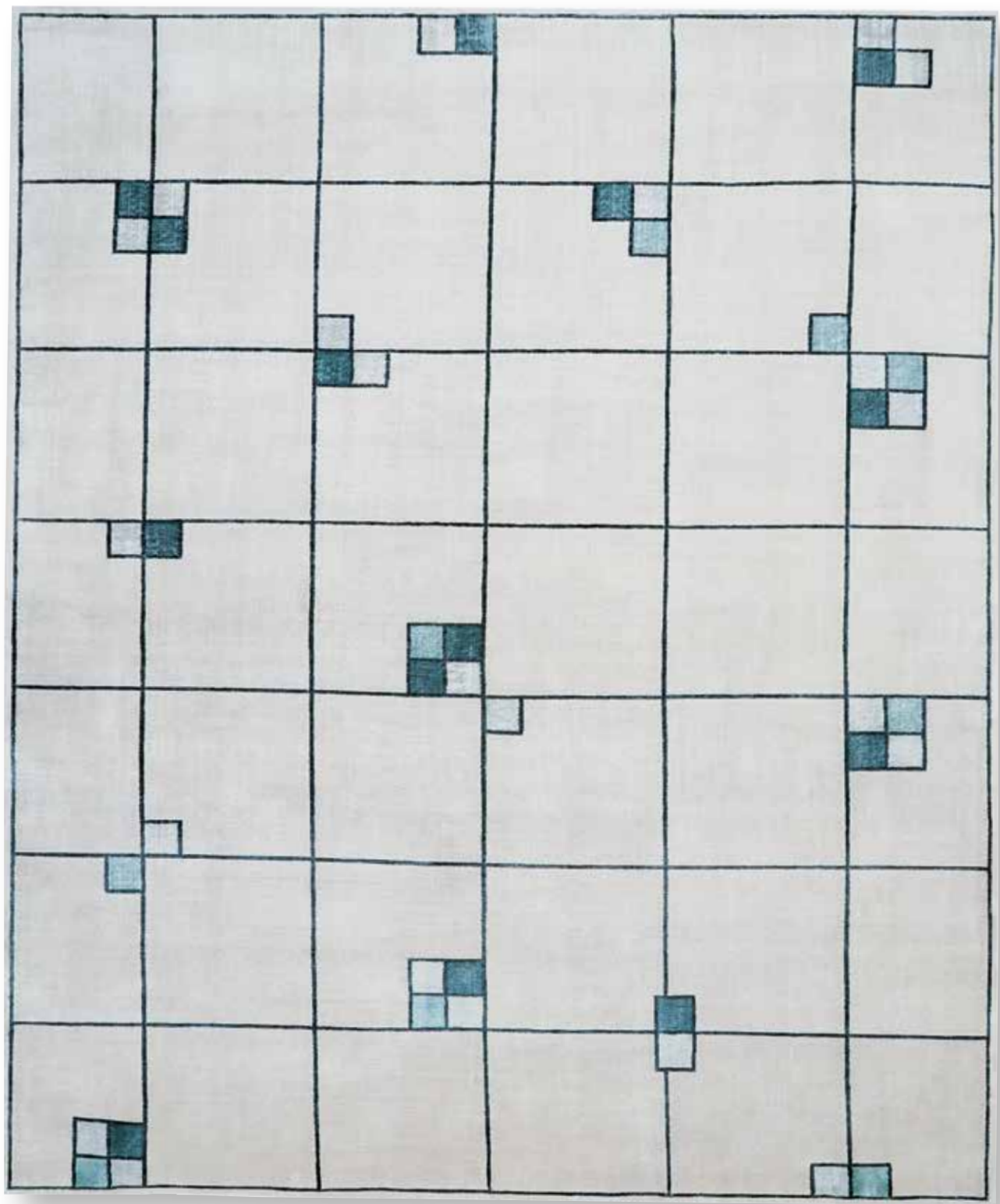
GROUP A







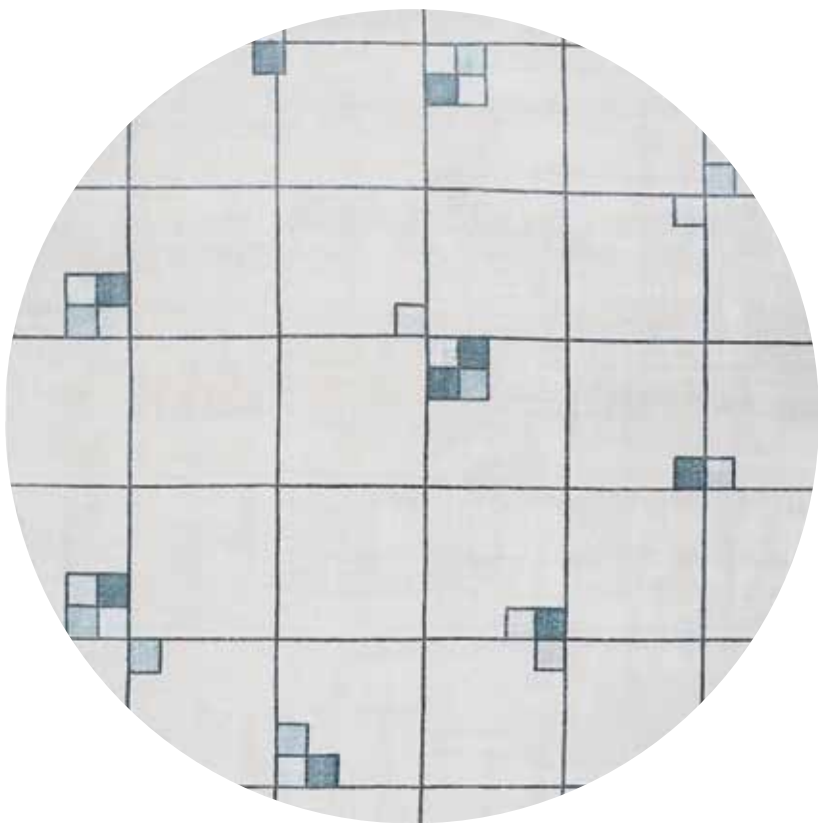




DE STIJL MEDITERRANEAN SAND 47-0019 | CGS04 MDSND  
NEW ZEALAND WOOL & SILK | TIBETAN WEAVE, HAND KNOTTED

GROUP A





8FT ROUND AREA RUG

Graphite detailing  
on rich sand are  
showcased in this  
wool & silk rug,  
offering a metropolitan  
elegance.

NEW ZEALAND WOOL & SILK  
TIBETAN WEAVE  
HAND KNOTTED

DE STIJL MEDITERRANEAN SAND  
47-0019 | CGS04 MDSND

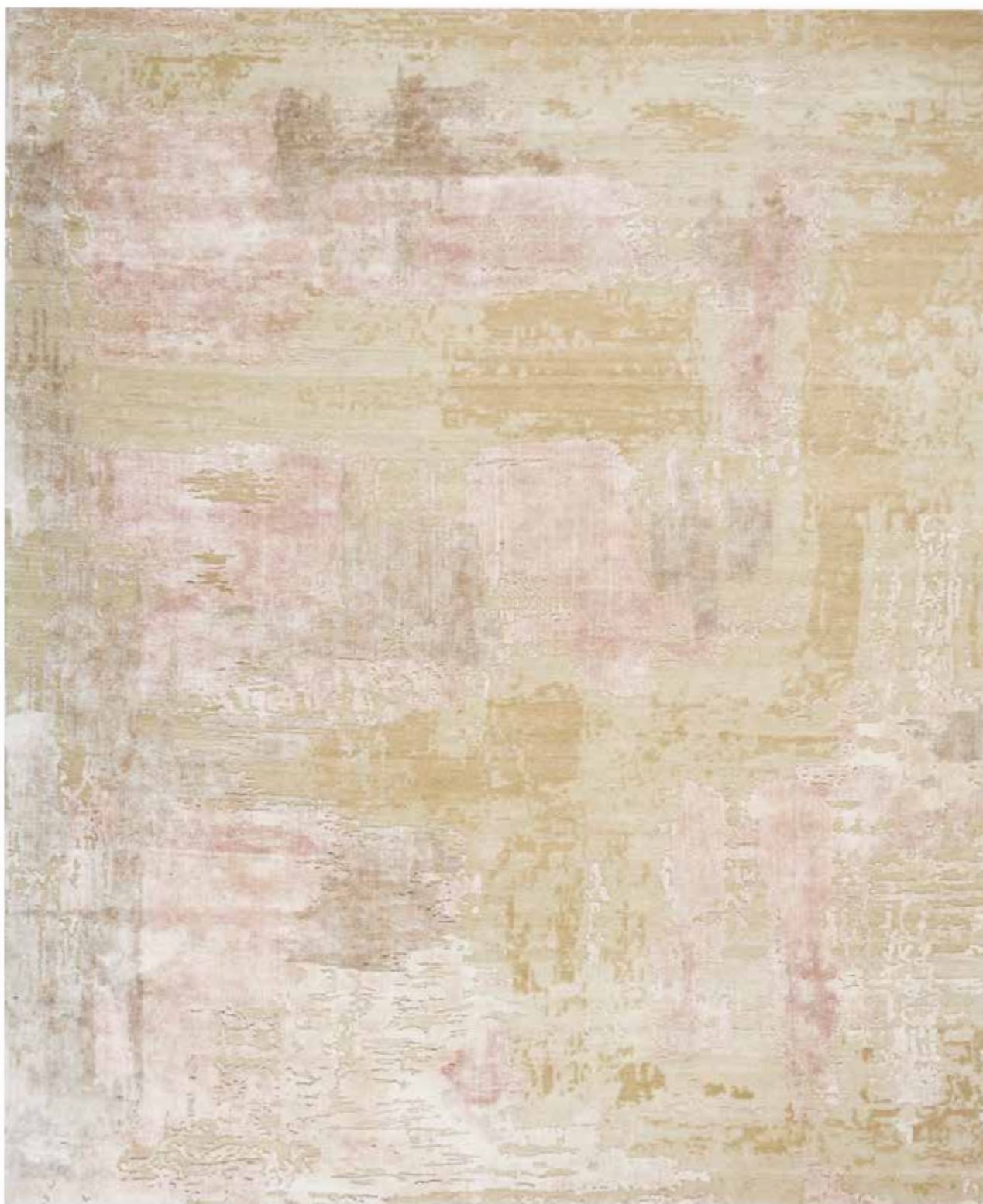
GROUP A











MIRAGE SHALE/DUSKY ROSE 47-0022 | CGS05 SHALE  
NEW ZEALAND WOOL & SILK | TIBETAN WEAVE, HAND KNOTTED

GROUP A





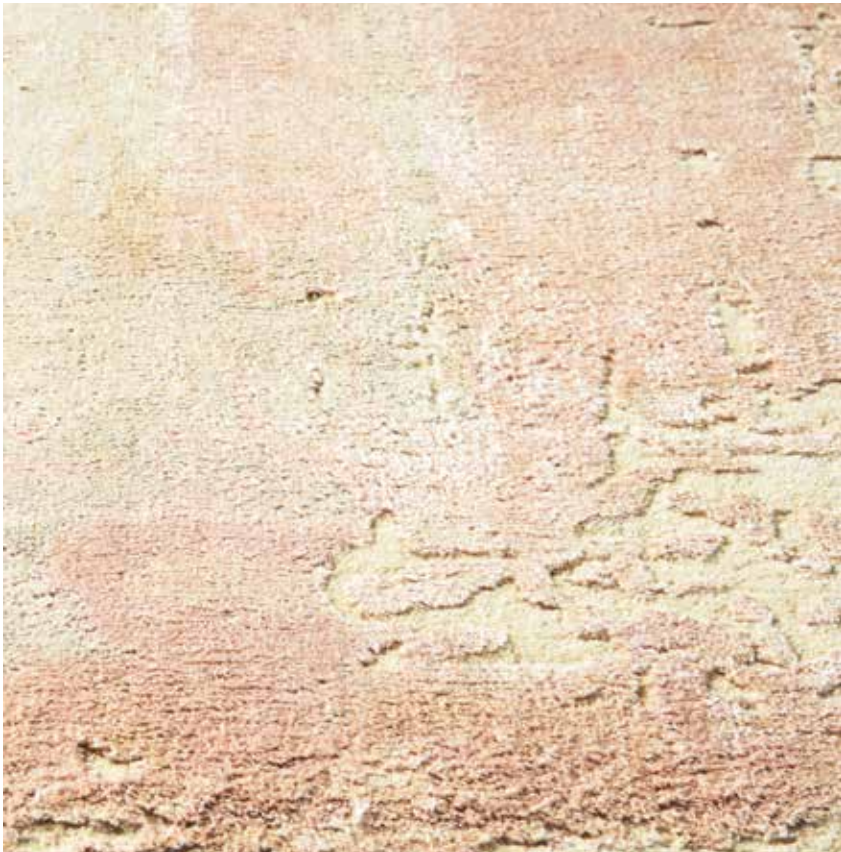
8FT ROUND AREA RUG

Dusky rose and warm  
beige colors blend in  
this bisque-toned wool  
& silk rug, creating a  
most subtle of  
textured styles.

NEW ZEALAND WOOL & SILK  
TIBETAN WEAVE  
HAND KNOTTED

MIRAGE SHALE/DUSKY ROSE  
47-0022 | CGS05 SHALE

GROUP A













MIRAGE AJMER/MISTED MORNING & CIEL 47-0022 | CGS06 AJMER  
NEW ZEALAND WOOL & SILK | TIBETAN WEAVE, HAND KNOTTED

GROUP A





8FT ROUND AREA RUG

A rug that evokes the colors of misty morning dew with cool gris and ciel, creating a mood of calm and serenity.

NEW ZEALAND WOOL & SILK  
TIBETAN WEAVE  
HAND KNOTTED

MIRAGE AJMER/MISTED MORNING CIEL  
47-0022 | CGS06 AJMER

GROUP A

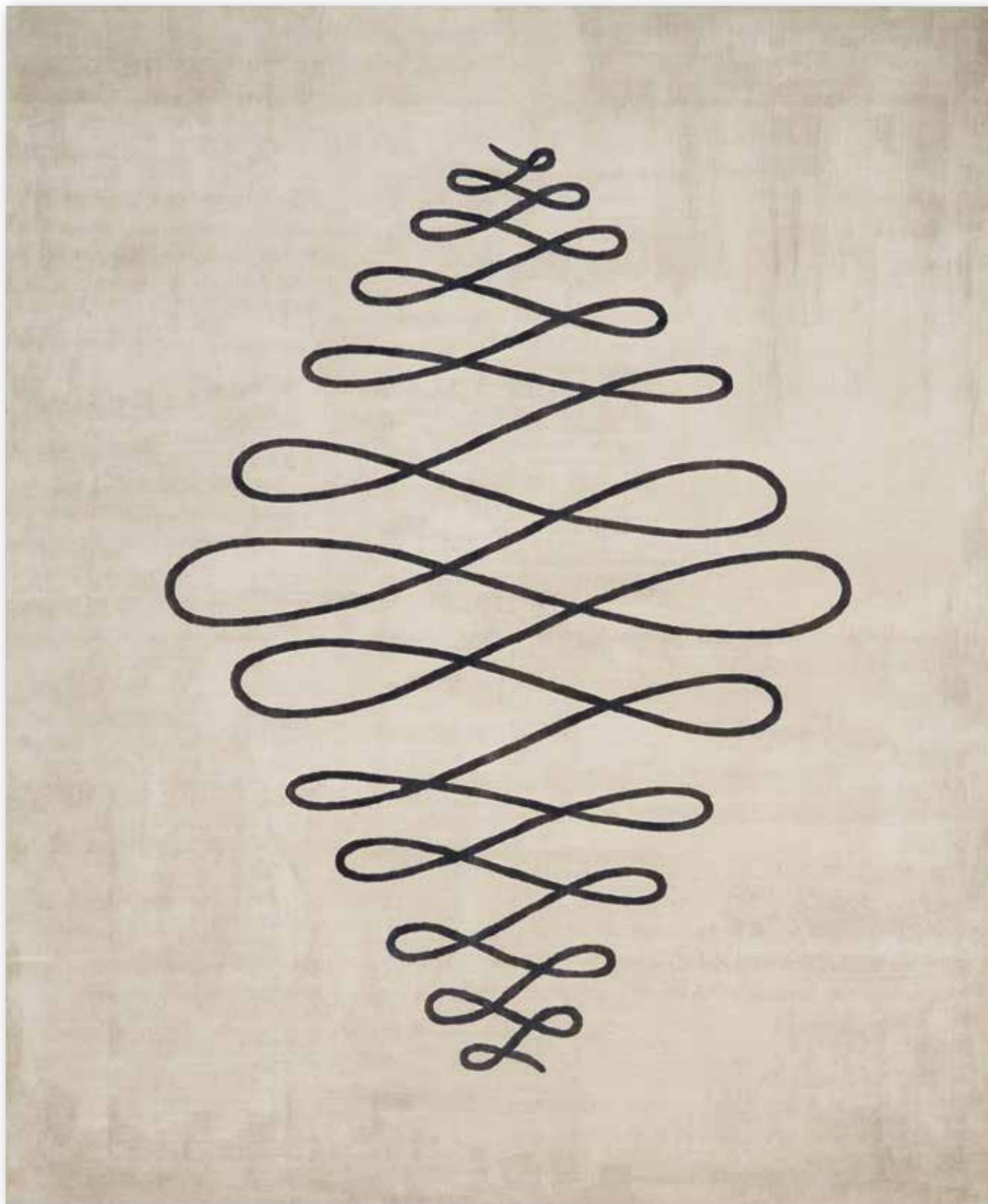








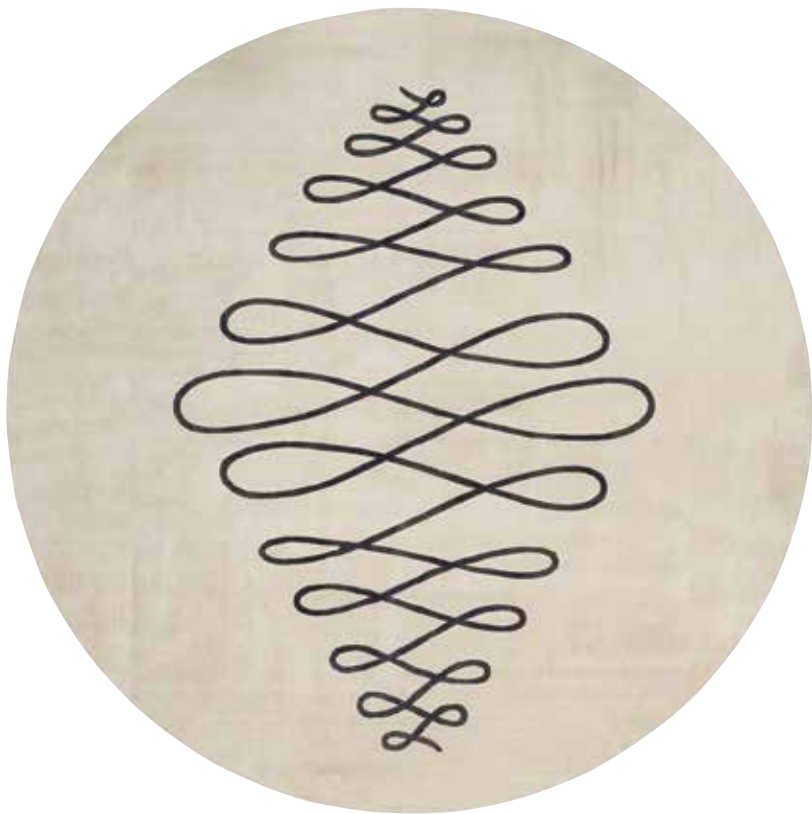




**GUILLOCHÉ SEA SAND 47-0010 | CGS09 SESND**  
NEW ZEALAND WOOL & SILK | TIBETAN WEAVE, HAND KNOTTED

GROUP A





8FT ROUND AREA RUG

Soft greys and sea  
sands bring this period  
scroll design to life in  
this wool & silk rug.

NEW ZEALAND WOOL & SILK  
TIBETAN WEAVE  
HAND KNOTTED

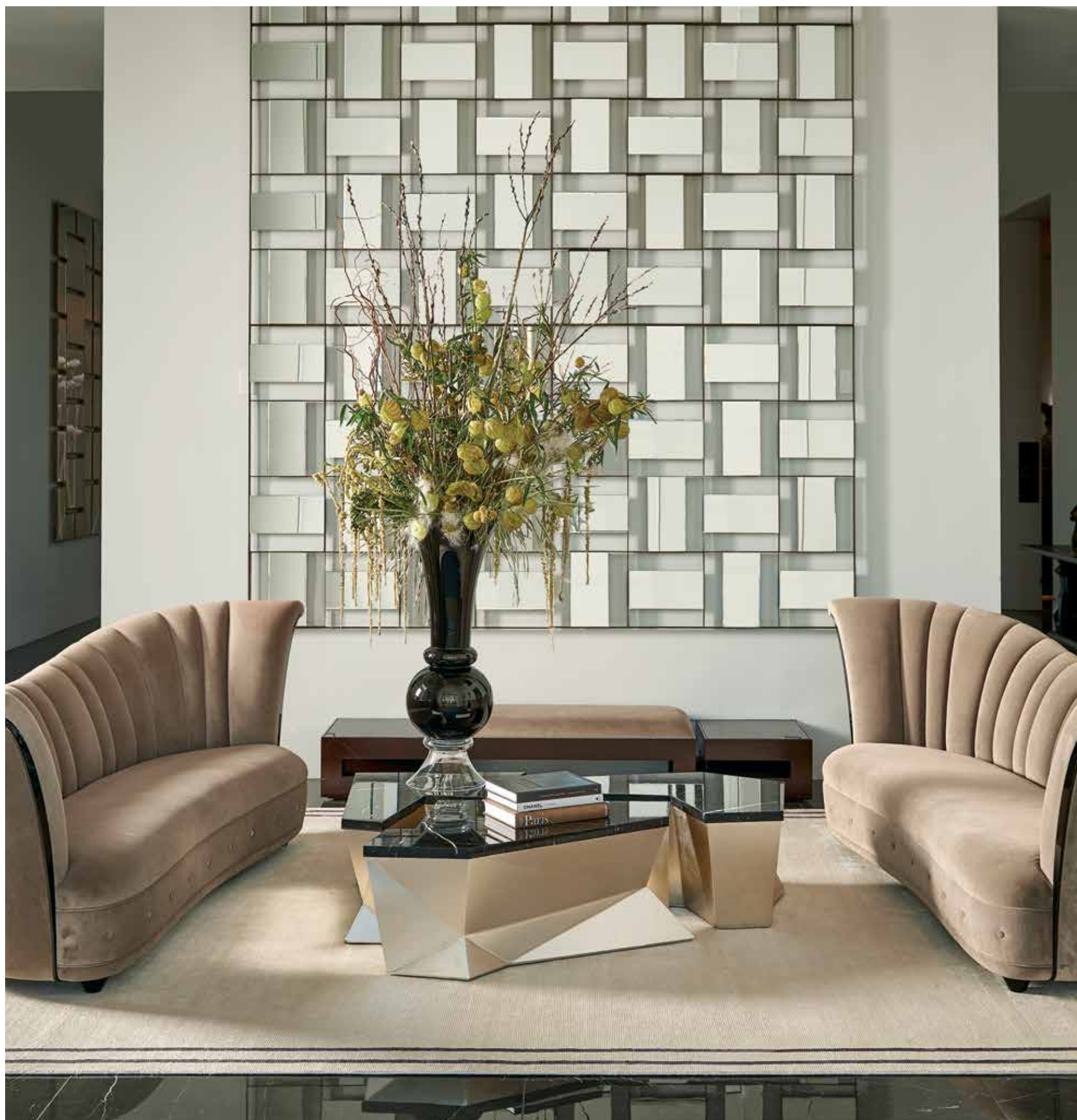
GUILLOCHÉ SEA SAND  
47-0010 | CGS09 SESND

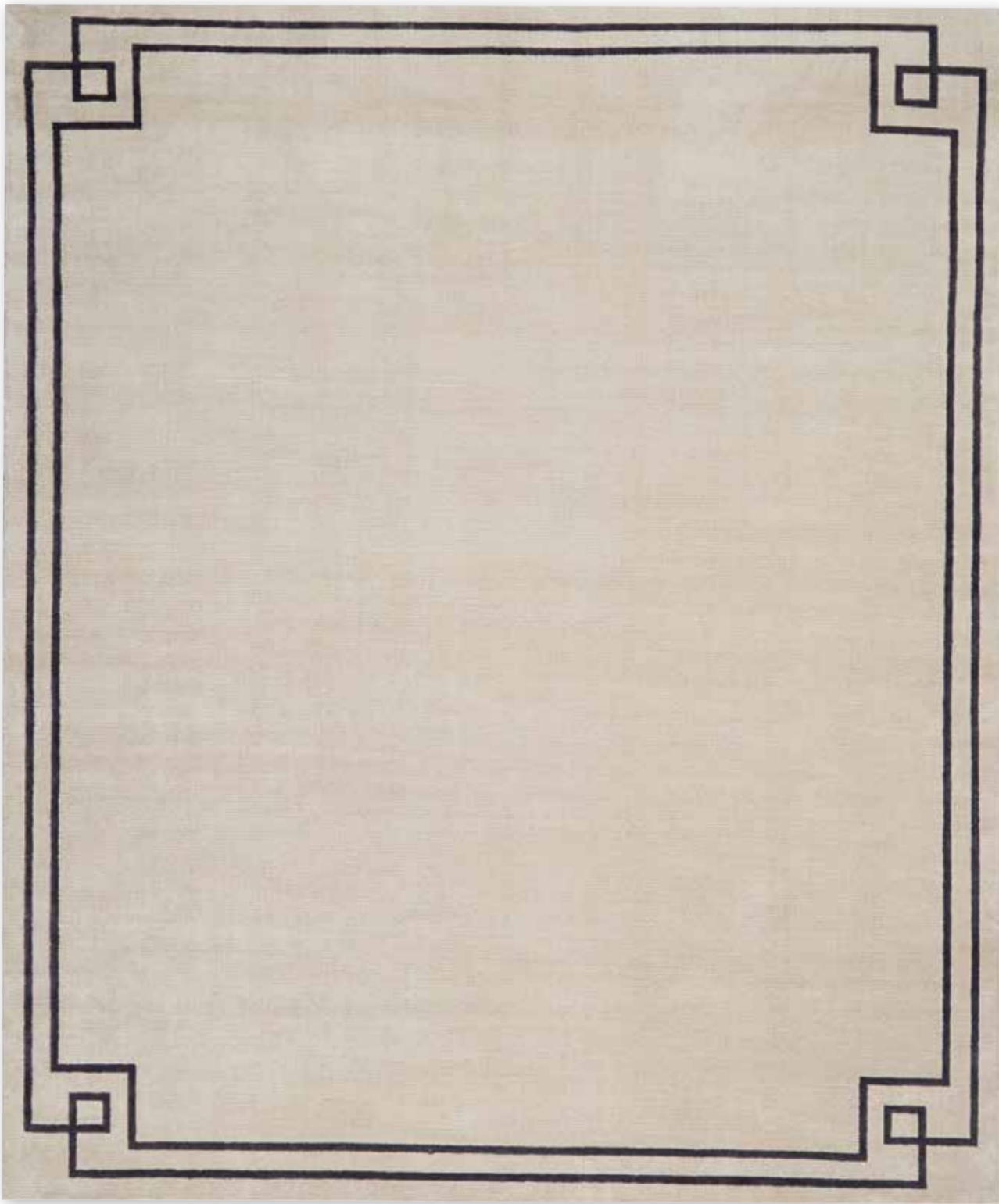
GROUP A







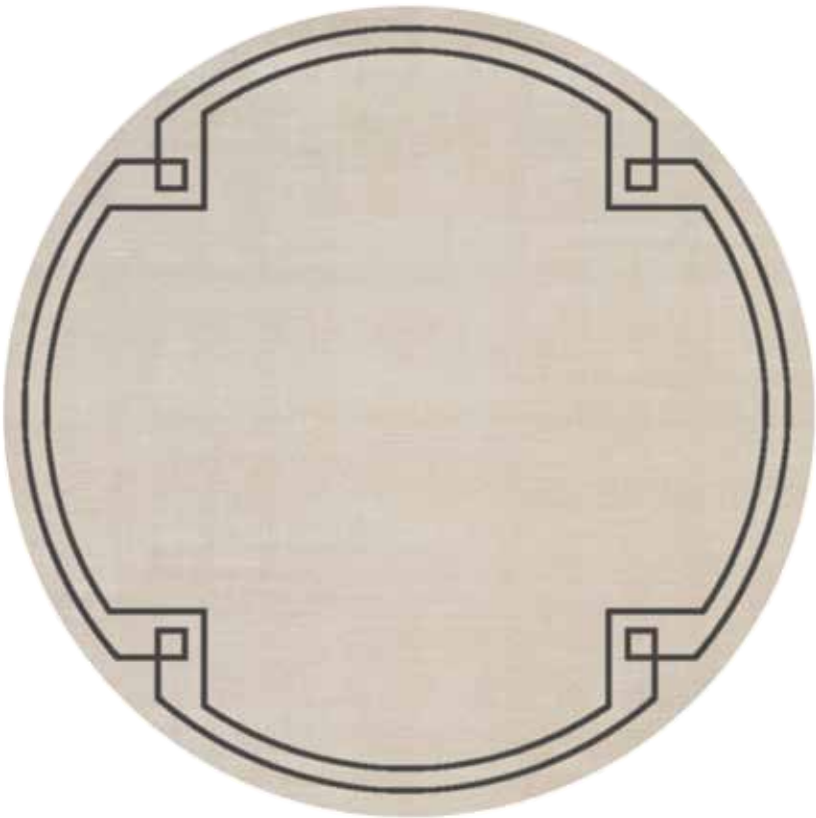




**FINESSE MEDITERRANEAN SAND 47-0007 | CGS10 MDSND**  
NEW ZEALAND WOOL & SILK | TIBETAN WEAVE, HAND KNOTTED

GROUP A





8FT ROUND AREA RUG

A subtle yet powerful statement, this timeless 1920s-inspired design features a neutral palette in wool & silk.

NEW ZEALAND WOOL & SILK  
TIBETAN WEAVE  
HAND KNOTTED

FINESSE MEDITERRANEAN SAND  
47-0007 | CGS10 MDSND

GROUP A







“

With some of my recent pieces, I found myself designing asymmetrically, from coffee tables to wall mirrors. It is somewhat unexpected in its design, and yet somehow perfectly balanced.

—CHRISTOPHER GUY











**ABSTRAIT SEA SAND 47-0013 | CGS11 SESND**  
NEW ZEALAND WOOL & SILK | TIBETAN WEAVE, HAND KNOTTED

GROUP A





8FT ROUND AREA RUG

A natural fabric punctuated with black and charcoal create a mesmerizing paint-stroke abstract effect in this one-of-a-kind rug.

NEW ZEALAND WOOL & SILK  
TIBETAN WEAVE  
HAND KNOTTED

ABSTRAIT SEA SAND  
47-0013 | CGS11 SESND

GROUP A









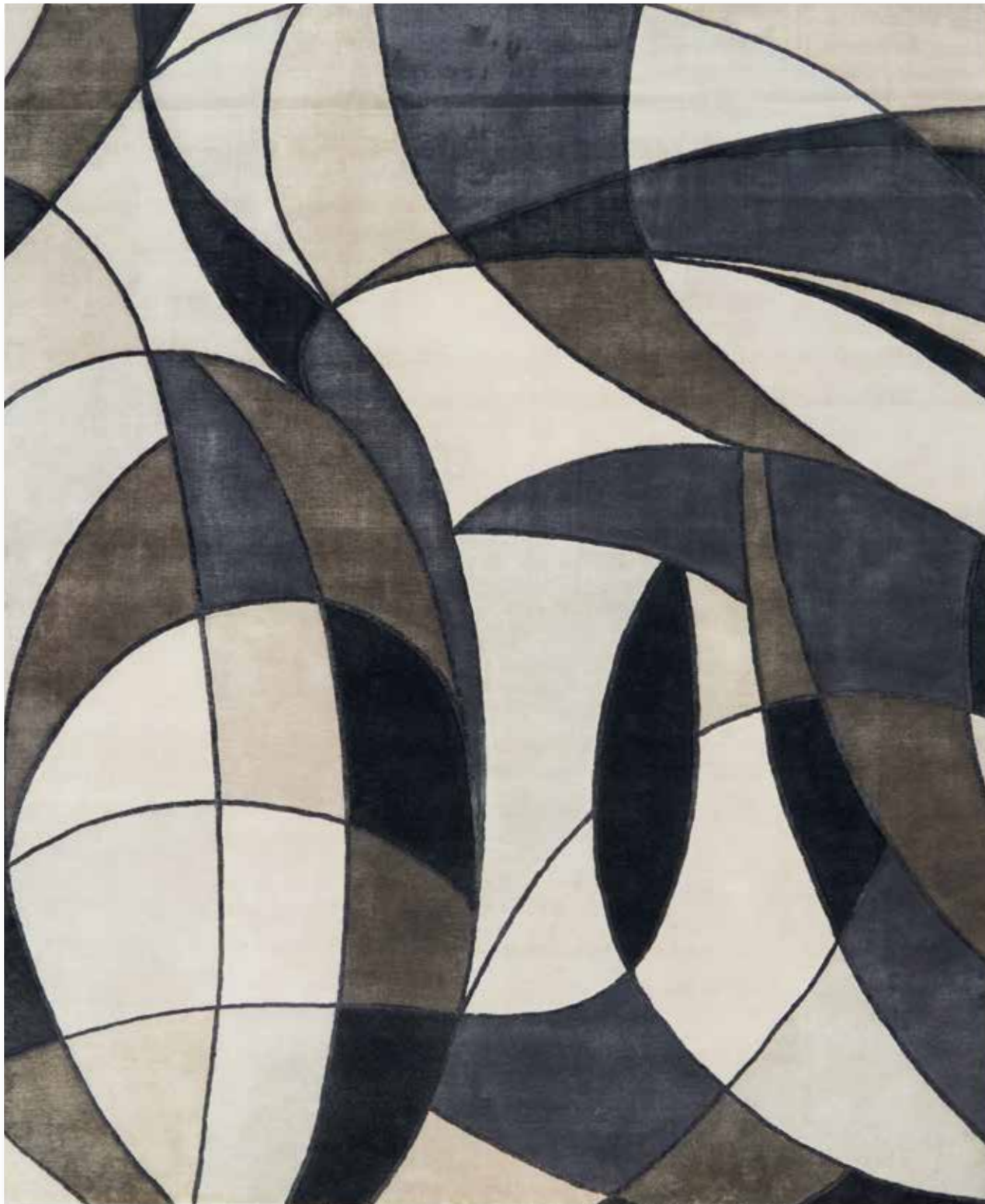












ASYMÉTRIE MEDITERRANEAN SAND/CHIC GREY 47-0001 | CGS18 MDSND  
NEW ZEALAND WOOL & SILK | TIBETAN WEAVE, HAND KNOTTED

GROUP A





8FT ROUND AREA RUG

Rich warm tones  
of mink browns,  
mediterranean sands,  
and chic greys blend  
together effortlessly  
in this cubist design of  
wool & silk.

NEW ZEALAND WOOL & SILK  
TIBETAN WEAVE  
HAND KNOTTED

ASYMÉTRIE MEDITERRANEAN SAND/CHIC GREY  
47-0001 | CGS18 MDSND

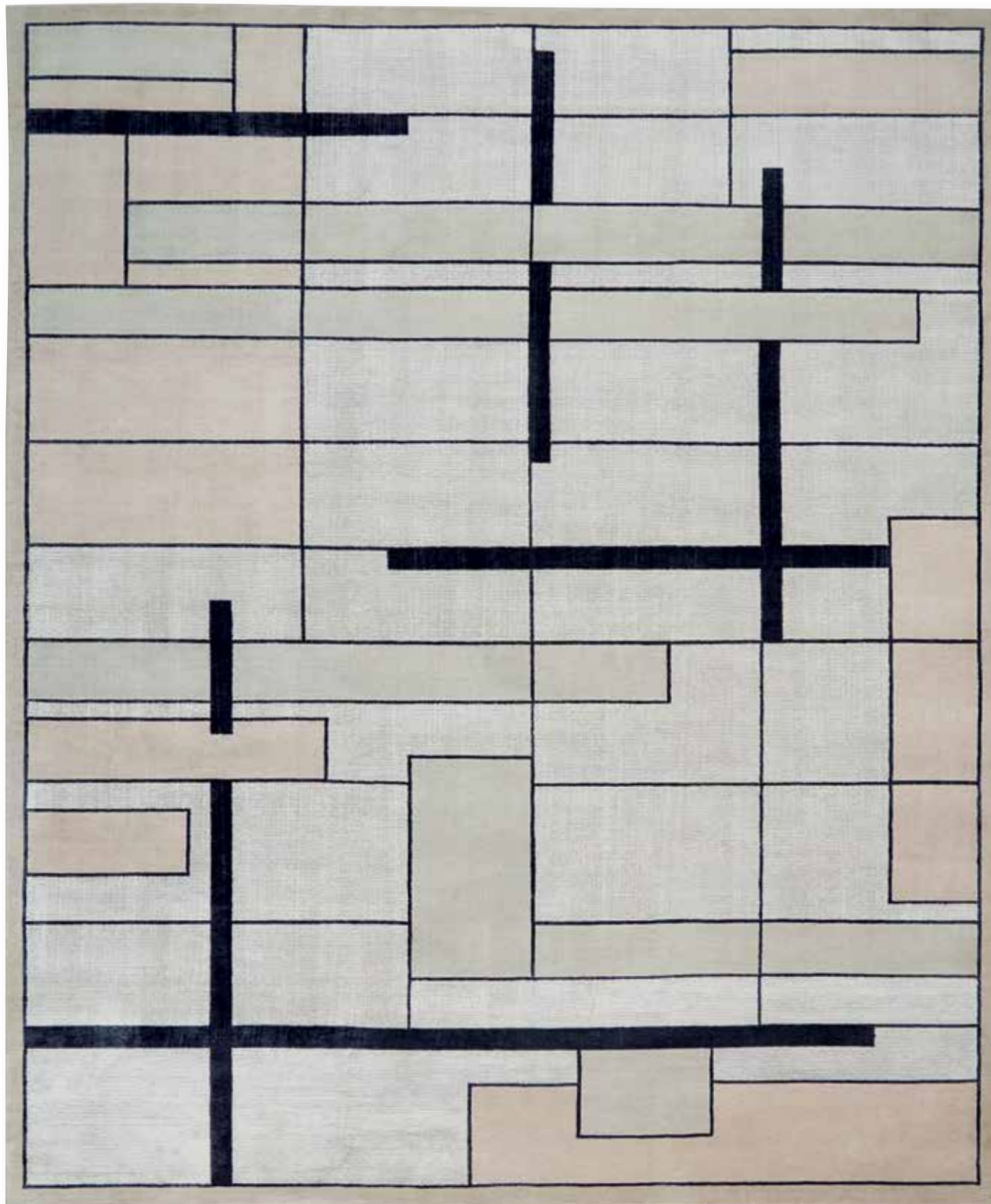
GROUP A







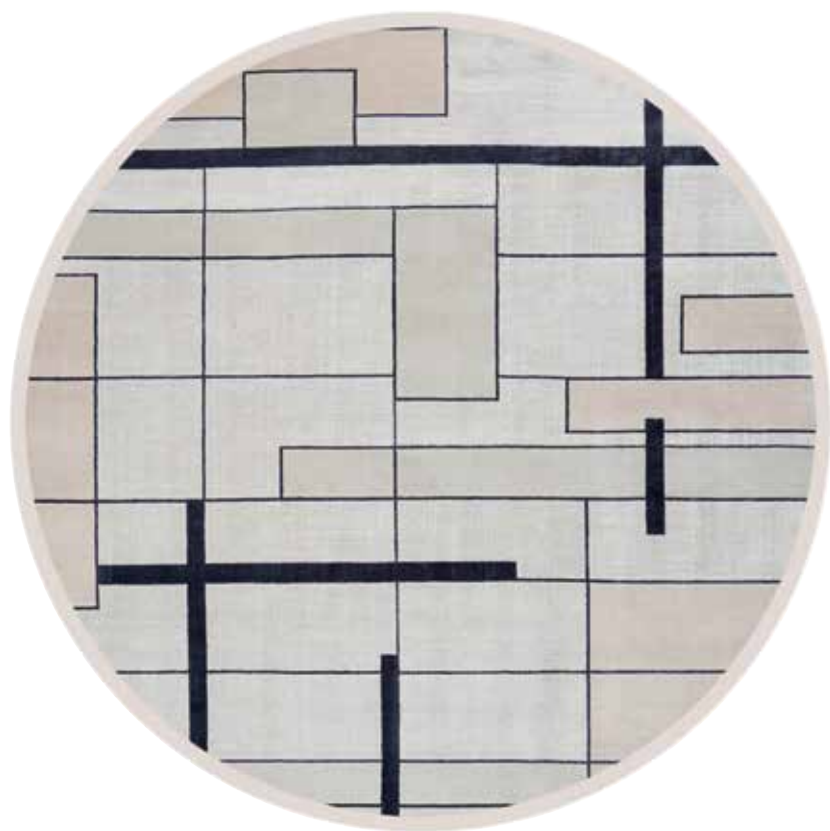




AVENUE SILVERY MOON 47-0004 | CGS19 SLVMN  
NEW ZEALAND WOOL & SILK | TIBETAN WEAVE, HAND KNOTTED

GROUP A





8FT ROUND AREA RUG

Striking black accents  
enhance the silvery  
moon of this rug,  
hand woven from  
wool & silk.

NEW ZEALAND WOOL & SILK  
TIBETAN WEAVE  
HAND KNOTTED

AVENUE SILVERY MOON  
47-0004 | CGS19 SLVMN

GROUP A















FLEURS MEDITERRANEAN SAND/STORM 47-0016 | CGS20 MDSND  
NEW ZEALAND WOOL & SILK | TIBETAN WEAVE, HAND KNOTTED

GROUP A





8FT ROUND AREA RUG

This rug creation was inspired by Coco Chanel's signature flower, the Camellia. Cool neutrals are emphasized, providing an exciting addition to any room.

NEW ZEALAND WOOL & SILK  
TIBETAN WEAVE  
HAND KNOTTED

FLEURS MEDITERRANEAN SAND/STORM  
47-0016 | CGS20 MDSND

GROUP A













FLEURS SAND SHELL/LIGHT CHIC GREY 47-0016 | CGS20 SNDSL  
NEW ZEALAND WOOL & SILK | TIBETAN WEAVE, HAND KNOTTED

GROUP A





8FT ROUND AREA RUG

This rug creation was inspired by Coco Chanel's signature flower, the Camellia. Dusky roses and blush pinks combine with grey accents provide a romantic ambiance.

NEW ZEALAND WOOL & SILK  
TIBETAN WEAVE  
HAND KNOTTED

FLEURS SAND SHELL/LIGHT CHIC GREY  
47-0016 | CGS20 SNDL

GROUP A













FLEURS TOURMALINE/STORM 47-0016 | CGS20 TOURM  
NEW ZEALAND WOOL & SILK | TIBETAN WEAVE, HAND KNOTTED

GROUP A





8FT ROUND AREA RUG

This rug creation was inspired by Coco Chanel’s signature flower, the Camellia. A bouquet of storm and tourmaline colors bring natural movement to this rich grey rug.

NEW ZEALAND WOOL & SILK  
TIBETAN WEAVE  
HAND KNOTTED

FLEURS TOURMALINE/STORM  
47-0016 | CGS20 TOURM

GROUP A



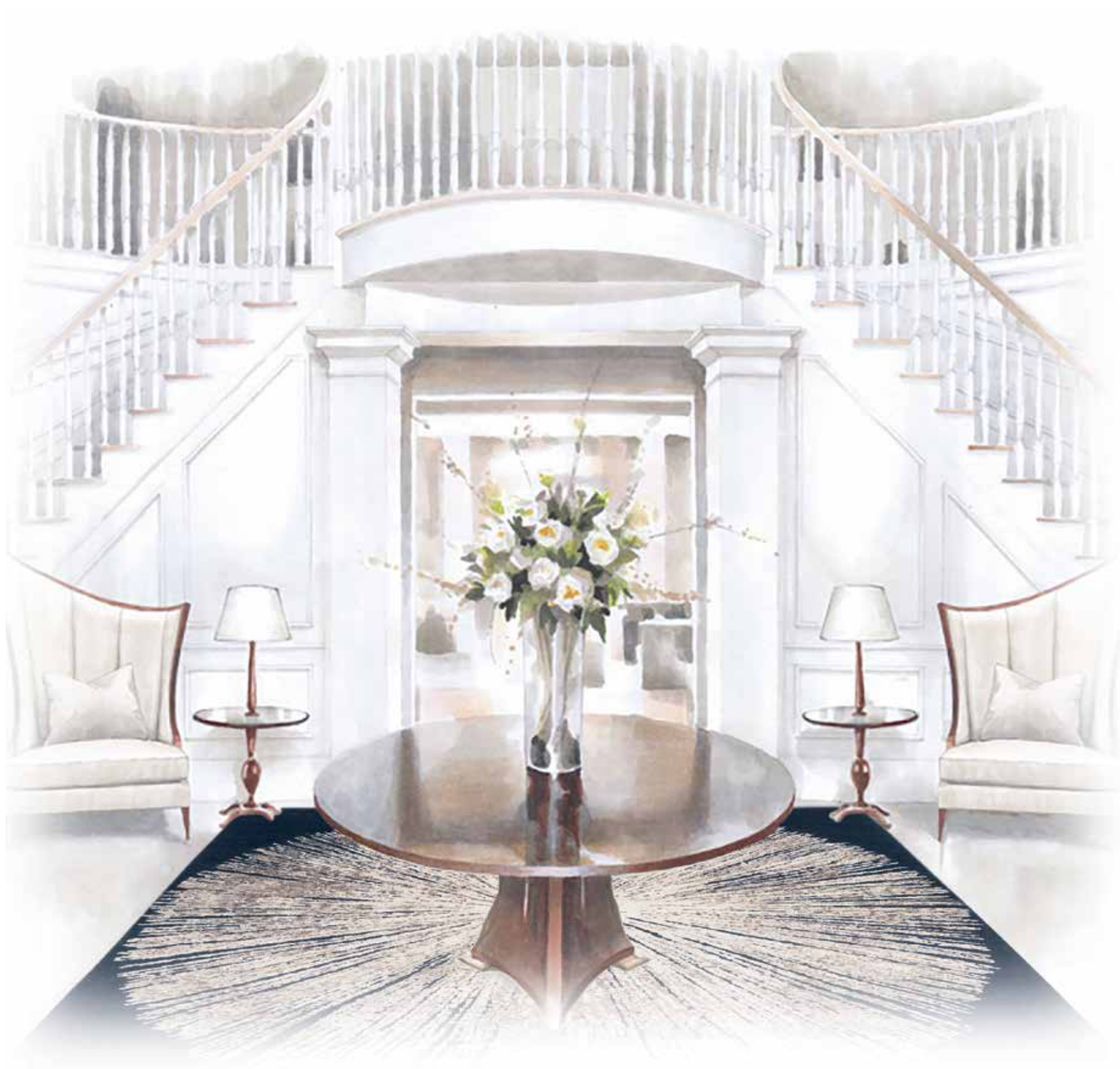




“

Within the Christopher Guy collection, we have some amazing statement pieces to excite and delight. When we created this collection with Nourison, it was key to include a rug that would add a bold statement to any room.

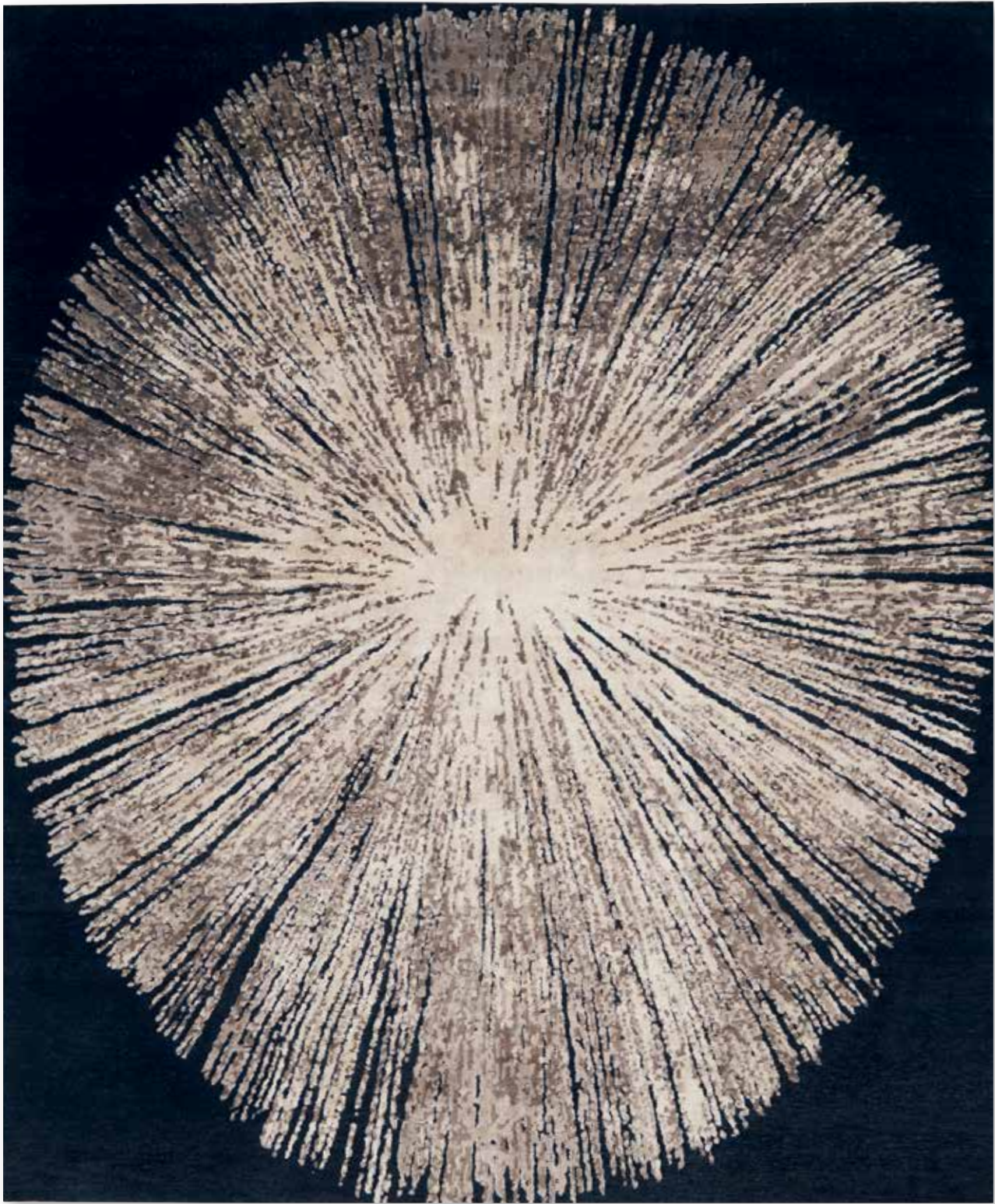
—CHRISTOPHER GUY







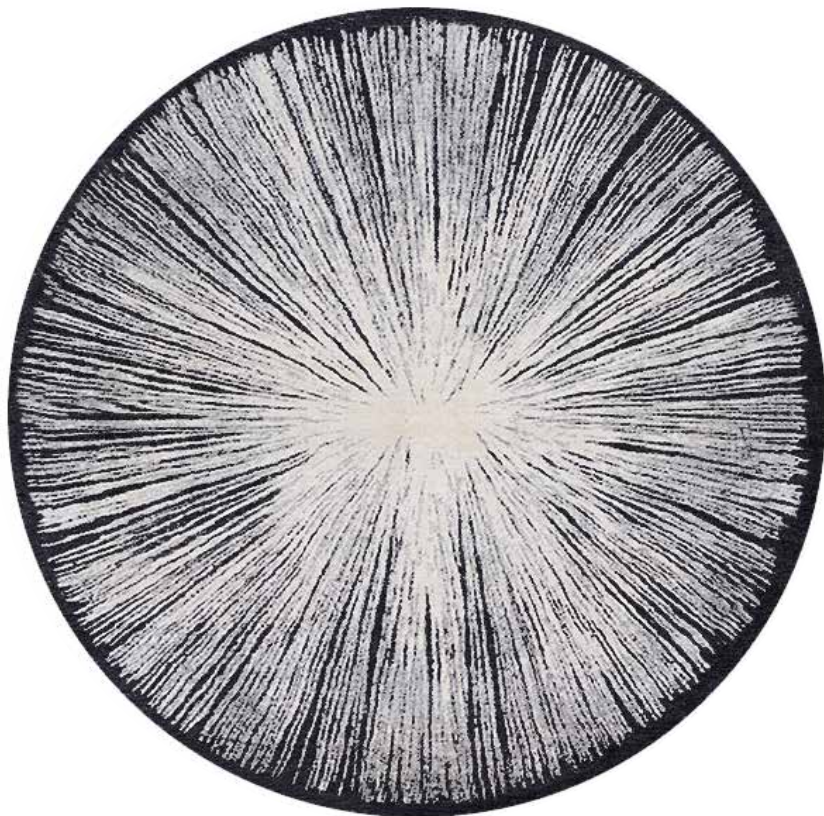




COSMOPOLITE NOIR 47-0031 | CGS21 NOIR  
NEW ZEALAND WOOL & SILK | TIBETAN WEAVE, HAND KNOTTED

GROUP A





8FT ROUND AREA RUG

A burst of excitement,  
piercing white silk  
layers with deep noir  
to create a three-  
dimensional effect in  
this wool & silk,  
one-of-a-kind rug.

NEW ZEALAND WOOL & SILK  
TIBETAN WEAVE  
HAND KNOTTED

COSMOPOLITE NOIR  
47-0031 | CGS21 NOIR

GROUP A











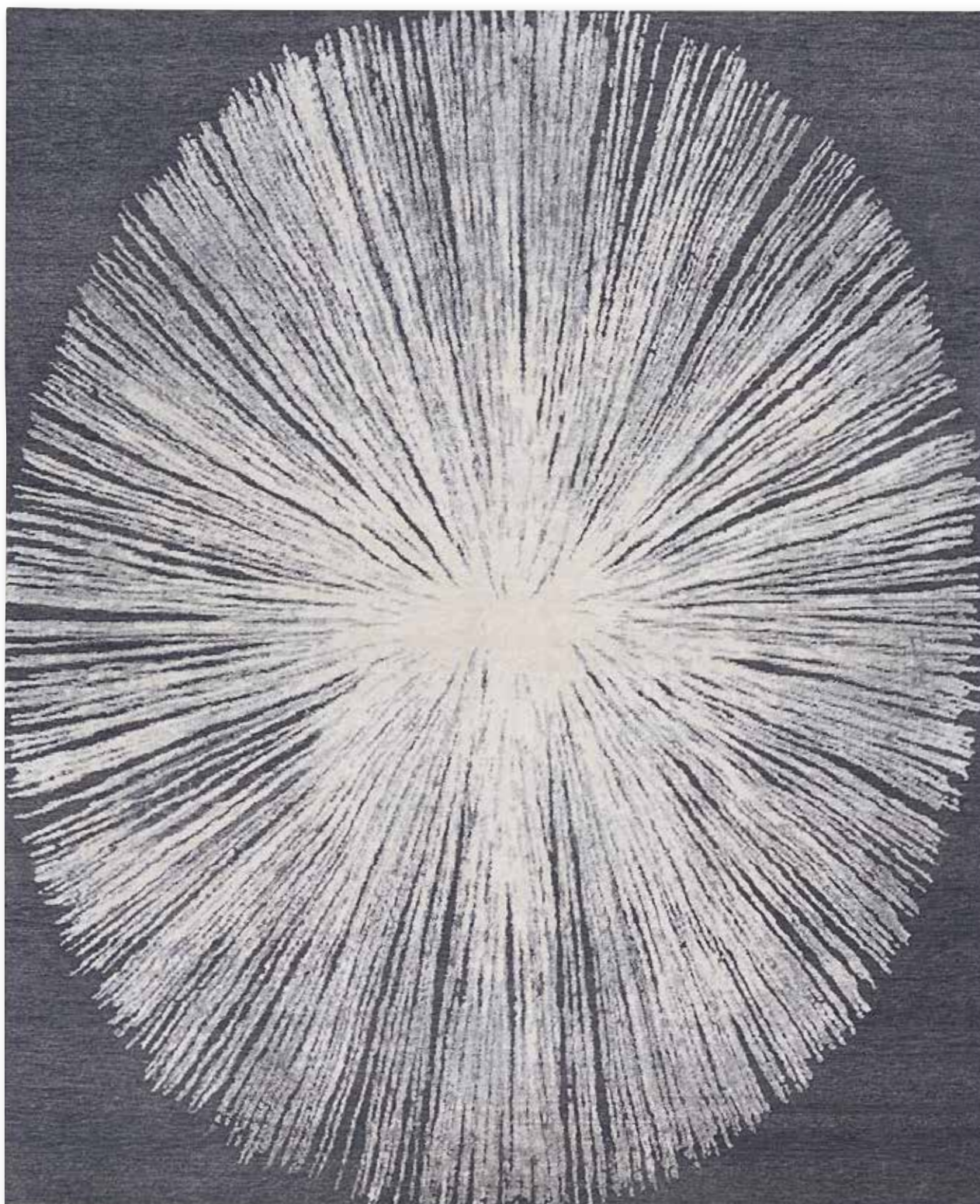








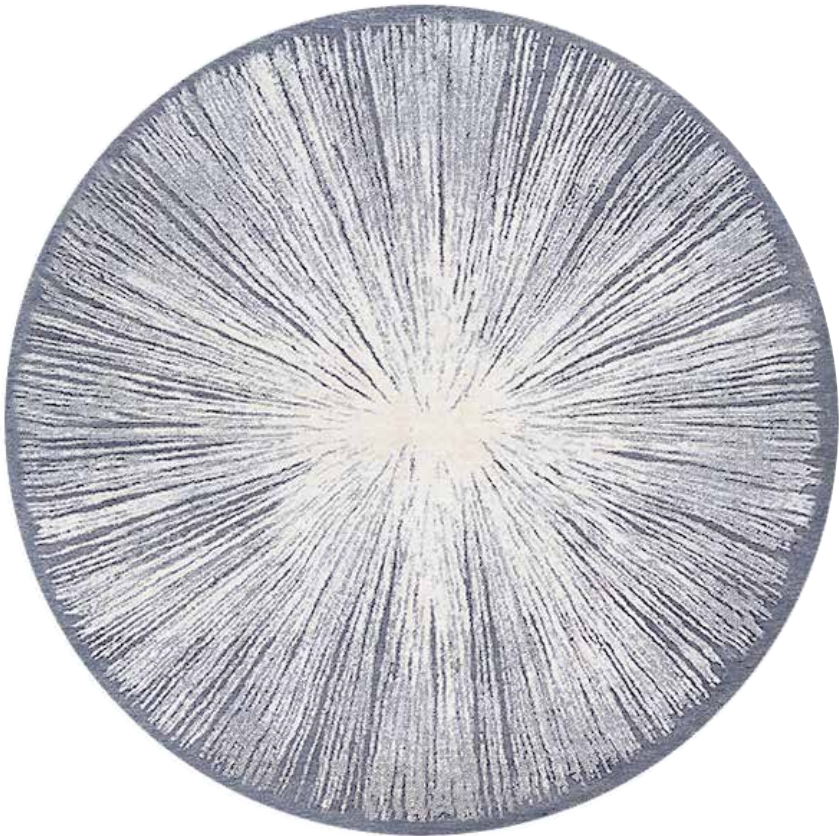




**COSMOPOLITE CHIC GREY 47-0031 | CGS21 CHGRY**  
NEW ZEALAND WOOL & SILK | TIBETAN WEAVE, HAND KNOTTED

GROUP A





8FT ROUND AREA RUG

Cool whites and  
naturals accent a deep  
chic grey to create a  
bold three-dimensional  
effect in this blend of  
wool & silk.

NEW ZEALAND WOOL & SILK  
TIBETAN WEAVE  
HAND KNOTTED

COSMOPOLITE CHIC GREY  
47-0031 | CGS21 CHGRY

GROUP A









“

To many, my designs have become synonymous with curvature and fluidity, creating motion within a static object to capture and draw the eye of the observer, as with this rug design.

—CHRISTOPHER GUY











L'ARTIST CHIC GREY 47-0034 | CGS22 CHGRY  
NEW ZEALAND WOOL & SILK | TIBETAN WEAVE, HAND KNOTTED

GROUP A





8FT ROUND AREA RUG

The fluidity of the light grey flows down this chic wool & silk rug, creating a subtle movement.

NEW ZEALAND WOOL & SILK  
TIBETAN WEAVE  
HAND KNOTTED

L'ARTIST CHIC GREY  
47-0034 | CGS22 CHGRY

GROUP A

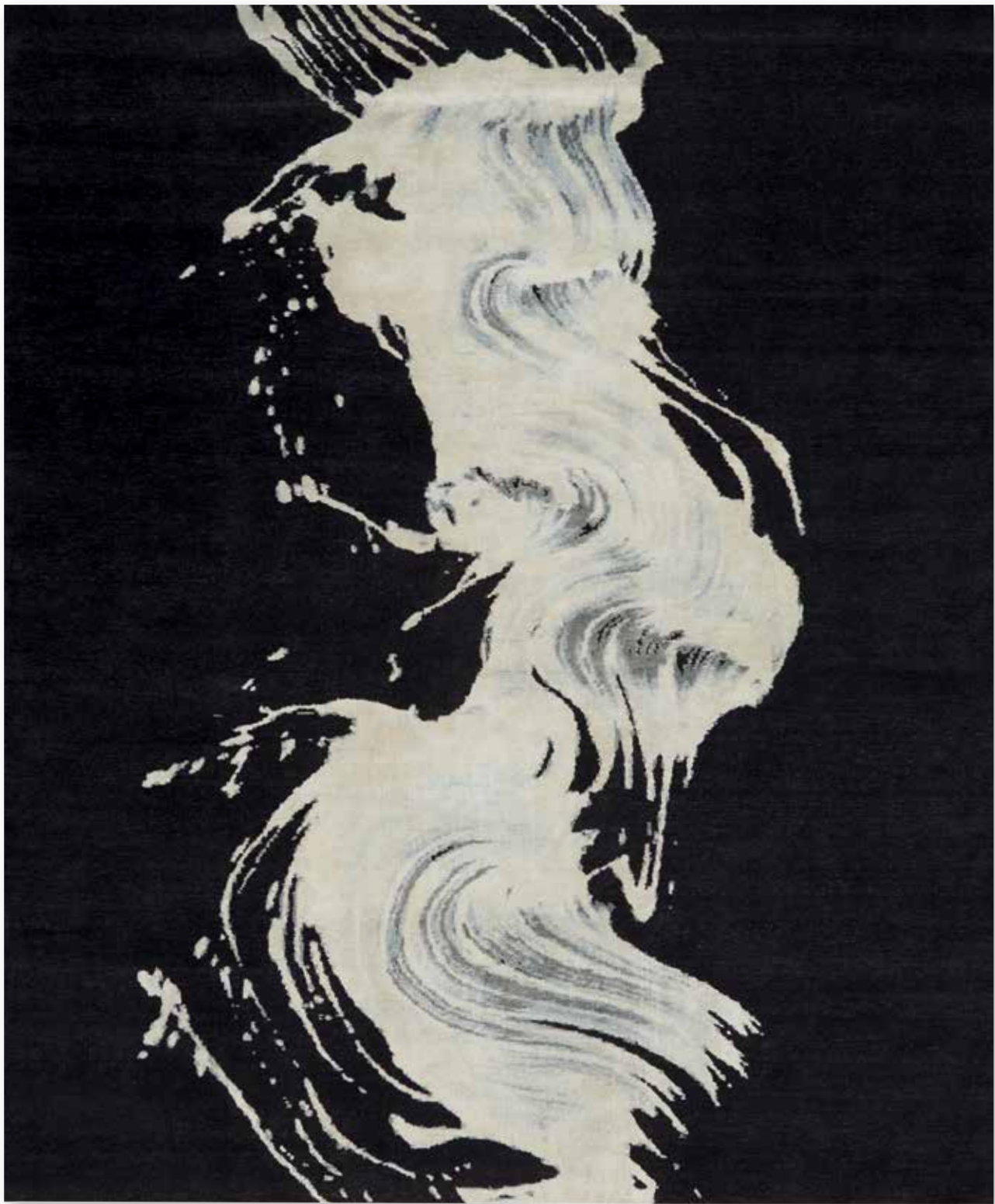












L'ARTIST NOIR 47-0034 | CGS22 NOIR  
NEW ZEALAND WOOL & SILK | TIBETAN WEAVE, HAND KNOTTED

GROUP A





8FT ROUND AREA RUG

Natural light gris and blanc is set on a canvas of deep noir, creating a flowing and dynamic design of wool & silk.

NEW ZEALAND WOOL & SILK  
TIBETAN WEAVE  
HAND KNOTTED

L'ARTIST NOIR  
47-0034 | CGS22 NOIR

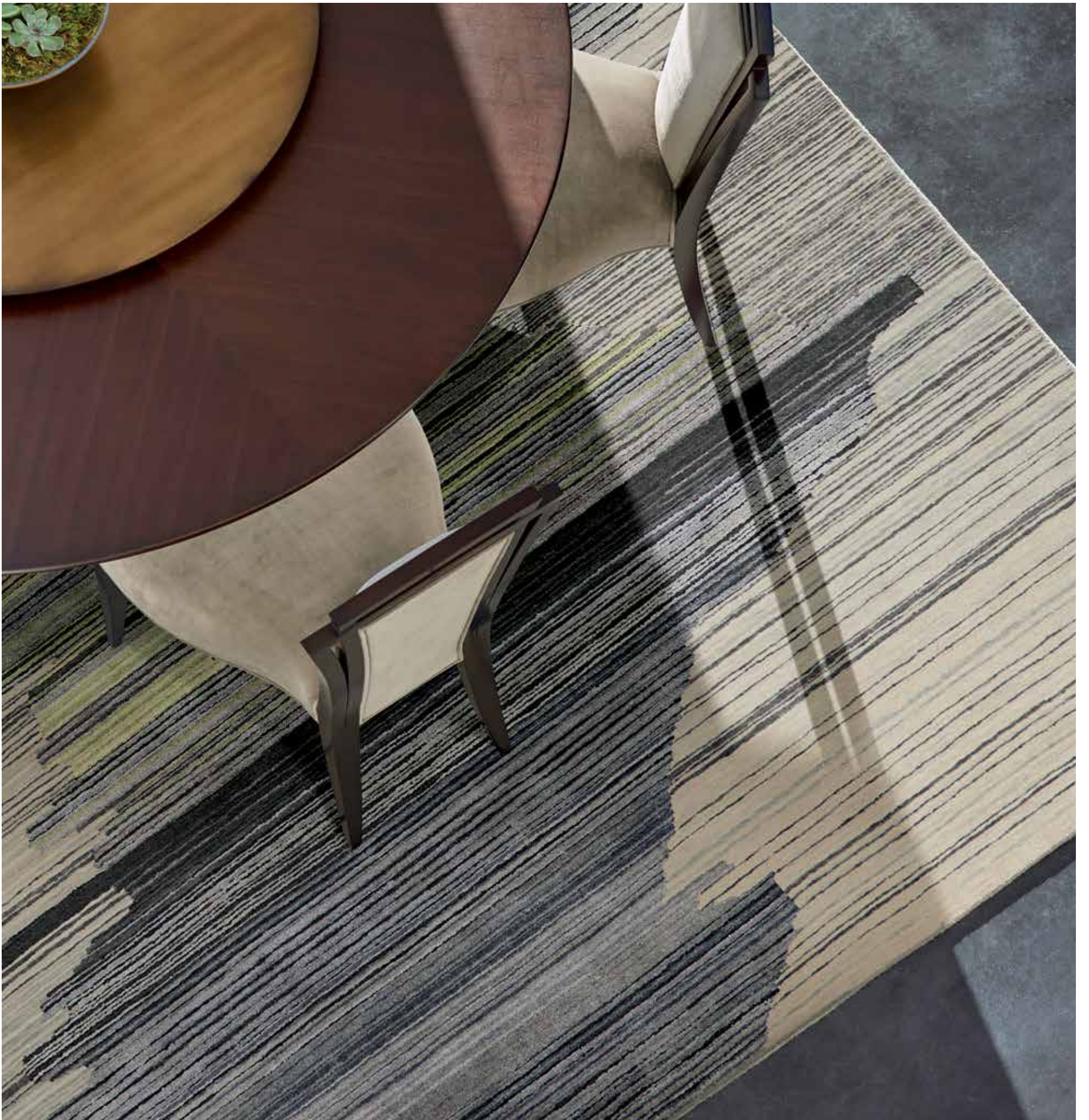
GROUP A















THE KNOLLS RUBIO/CHIC GREY/ PISTACHIO 47-0051 | CGS23 RUBIO  
NEW ZEALAND WOOL & SILK | TIBETAN WEAVE, HAND KNOTTED

GROUP A





8FT ROUND AREA RUG

Subtly striated ribbons  
of grey, pale green,  
and subtle blue across  
a beige surface for a  
hypnotic combination  
of textures and hues.

NEW ZEALAND WOOL & SILK  
TIBETAN WEAVE  
HAND KNOTTED

THE KNOLLS RUBIO/CHIC GREY/PISTACHIO  
47-0051 | CGS23 RUBIO

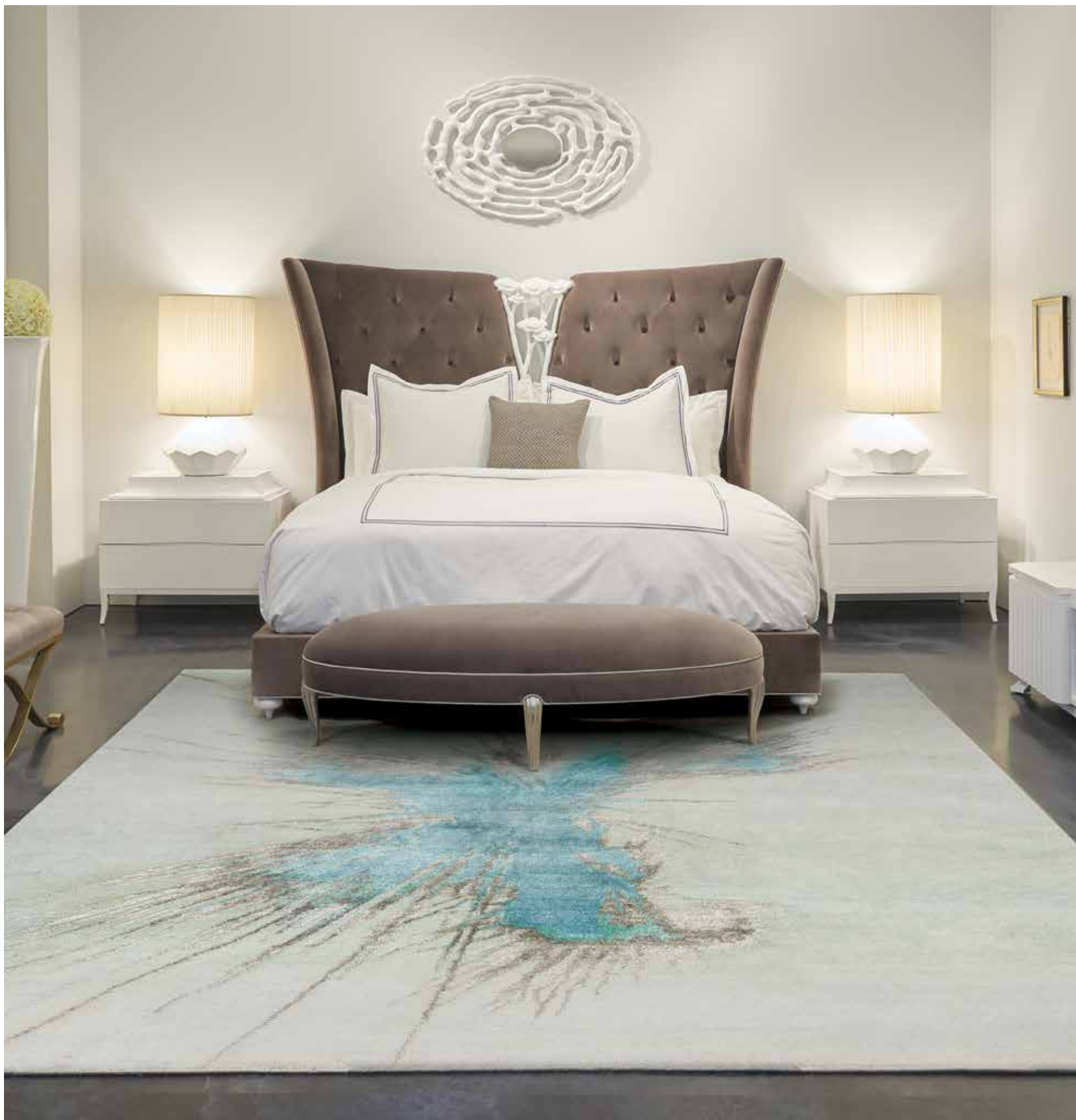
GROUP A

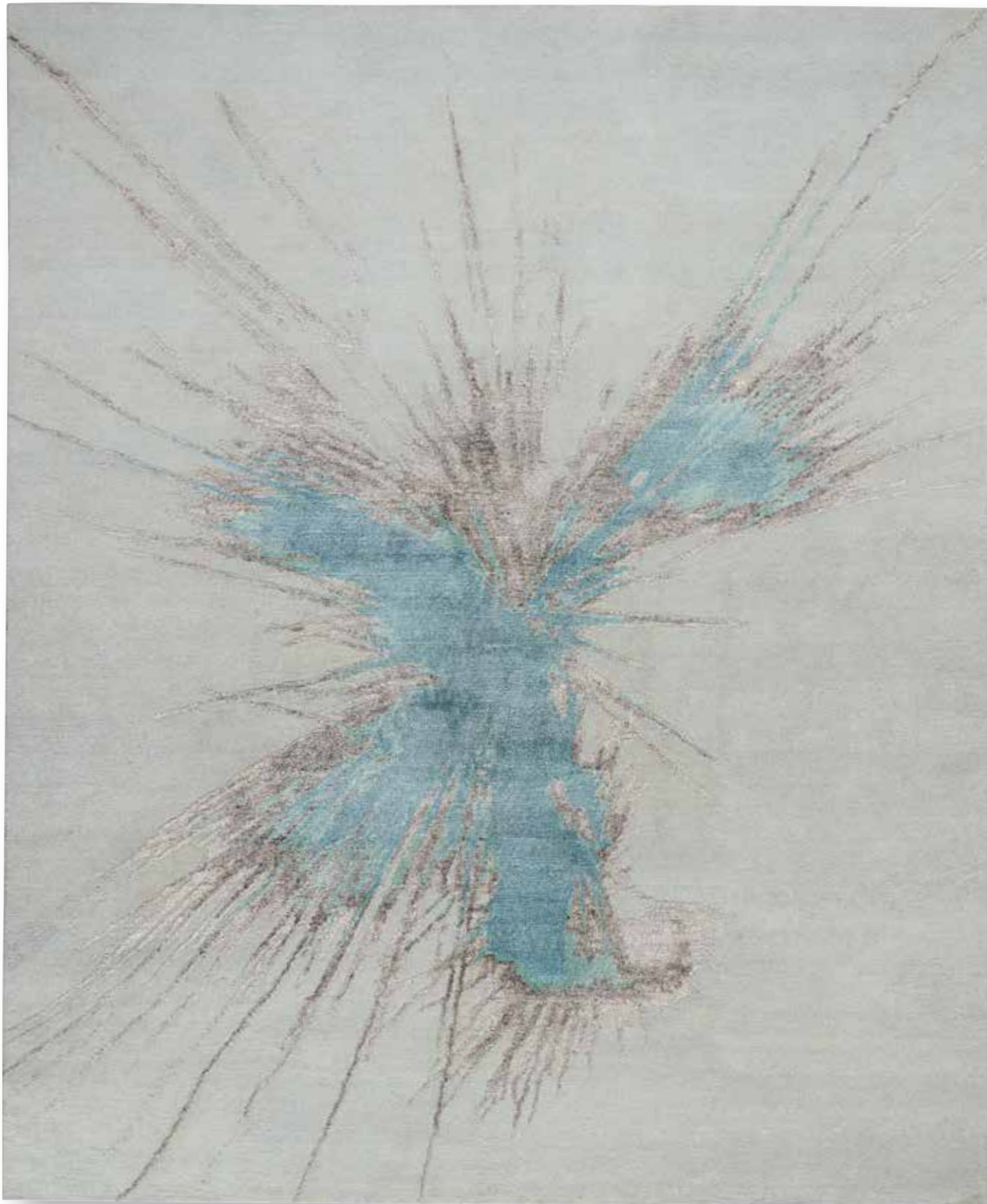








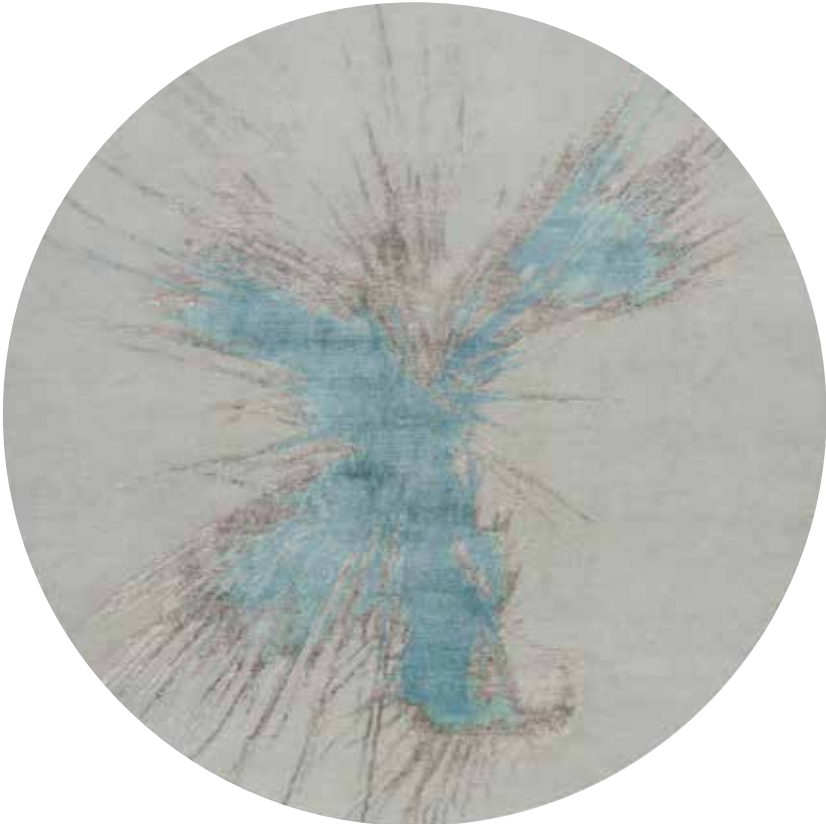




STARFIRE PALOMA GREY 47-0054 | CGS24 PALOM  
NEW ZEALAND WOOL & SILK | TIBETAN WEAVE, HAND KNOTTED

GROUP A





8FT ROUND AREA RUG

A burst of abstract  
artistic flair in sumptuous  
blue and grey tones  
with high-low texture.

NEW ZEALAND WOOL & SILK  
TIBETAN WEAVE  
HAND KNOTTED

STARFIRE PALOMA GREY  
47-0054 | CGS24 PALOM

GROUP A















**GRANITA BIRCH/CHIC GREY 47-0057 | CGS25 BIRCH**  
NEW ZEALAND WOOL & SILK | TIBETAN WEAVE, HAND KNOTTED

GROUP A





8FT ROUND AREA RUG

Hand woven from wool and silk, this chic contemporary rug brings muted shades of blue, grey, and earth tones together for a truly breathtaking view.

NEW ZEALAND WOOL & SILK  
TIBETAN WEAVE  
HAND KNOTTED

GRANITA BIRCH/CHIC GREY  
47-0057 | CGS25 BIRCH

GROUP A















QUIETUDE CHIC GREY/PALOMA 47-0060 | CGS26 CHGRY  
NEW ZEALAND WOOL & SILK | TIBETAN WEAVE, HAND KNOTTED

GROUP A





8FT ROUND AREA RUG

Raised pile design  
imbues the wool and  
silk with an artfully  
distressed style, with  
beautifully balanced  
tones of beige, grey,  
blue, and teal.

NEW ZEALAND WOOL & SILK  
TIBETAN WEAVE  
HAND KNOTTED

QUIETUDE CHIC GREY/PALOMA  
47-0060 | CGS26 CHGRY

GROUP A















**CASCADE ZINC/PALOMA 47-0063 | CGS27 ZINC**  
NEW ZEALAND WOOL & SILK | TIBETAN WEAVE, HAND KNOTTED

GROUP A





8FT ROUND AREA RUG

Glistening gold accents  
peaceful blues as they  
shimmer across the  
neutral field, creating a  
breathtaking reflection  
of natural beauty for  
your home.

NEW ZEALAND WOOL & SILK  
TIBETAN WEAVE  
HAND KNOTTED

CASCADE ZINC/PALOMA  
47-0063 | CGS27 ZINC

GROUP A











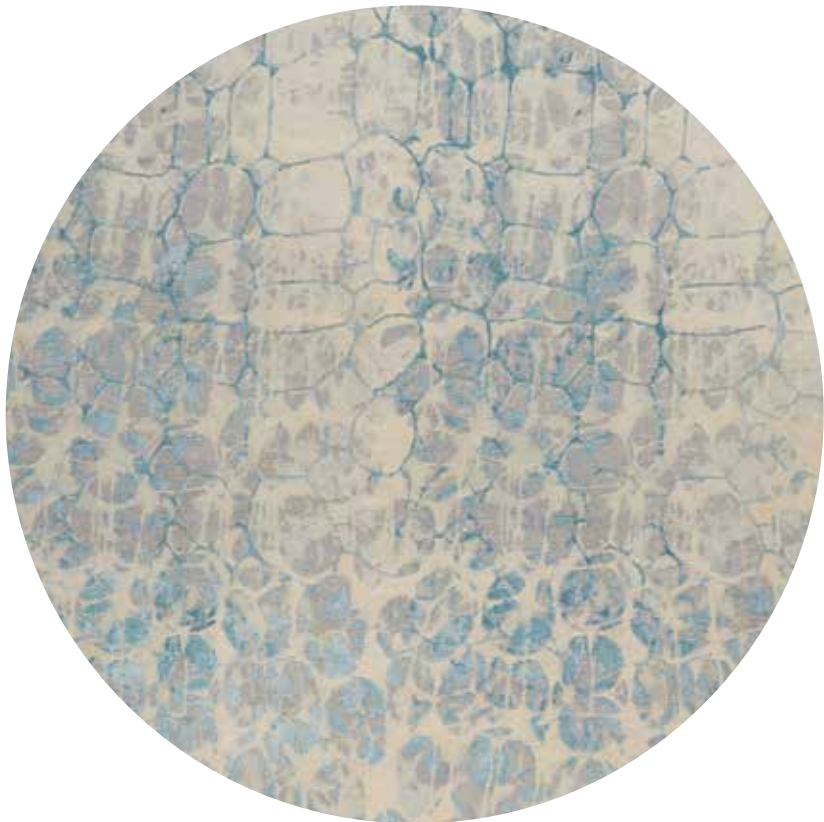




LEOPOLD BIRCH/PALOMA 47-0066 | CGS28 BIRCH  
NEW ZEALAND WOOL & SILK | TIBETAN WEAVE, HAND KNOTTED

GROUP A





8FT ROUND AREA RUG

Raised pile patterns  
of striated blue play  
out over the hand  
woven grey and beige  
pile of wool and silk,  
creating a complex,  
contemporary pattern.

NEW ZEALAND WOOL & SILK  
TIBETAN WEAVE  
HAND KNOTTED

LEOPOLD BIRCH/PALOMA  
47-0066 | CGS28 BIRCH

GROUP A















**SIENE ASH** 47-0048 | CGS29 ASH  
NEW ZEALAND WOOL & SILK | TIBETAN WEAVE, HAND KNOTTED

GROUP A





8FT ROUND AREA RUG

A magical sense of motion and serenity, with flowing patterns of gold and deep earth tones flowing across the wool and silk hand woven pile like a river.

NEW ZEALAND WOOL & SILK  
TIBETAN WEAVE  
HAND KNOTTED

SIENE ASH  
47-0048 | CGS29 ASH

GROUP A









“

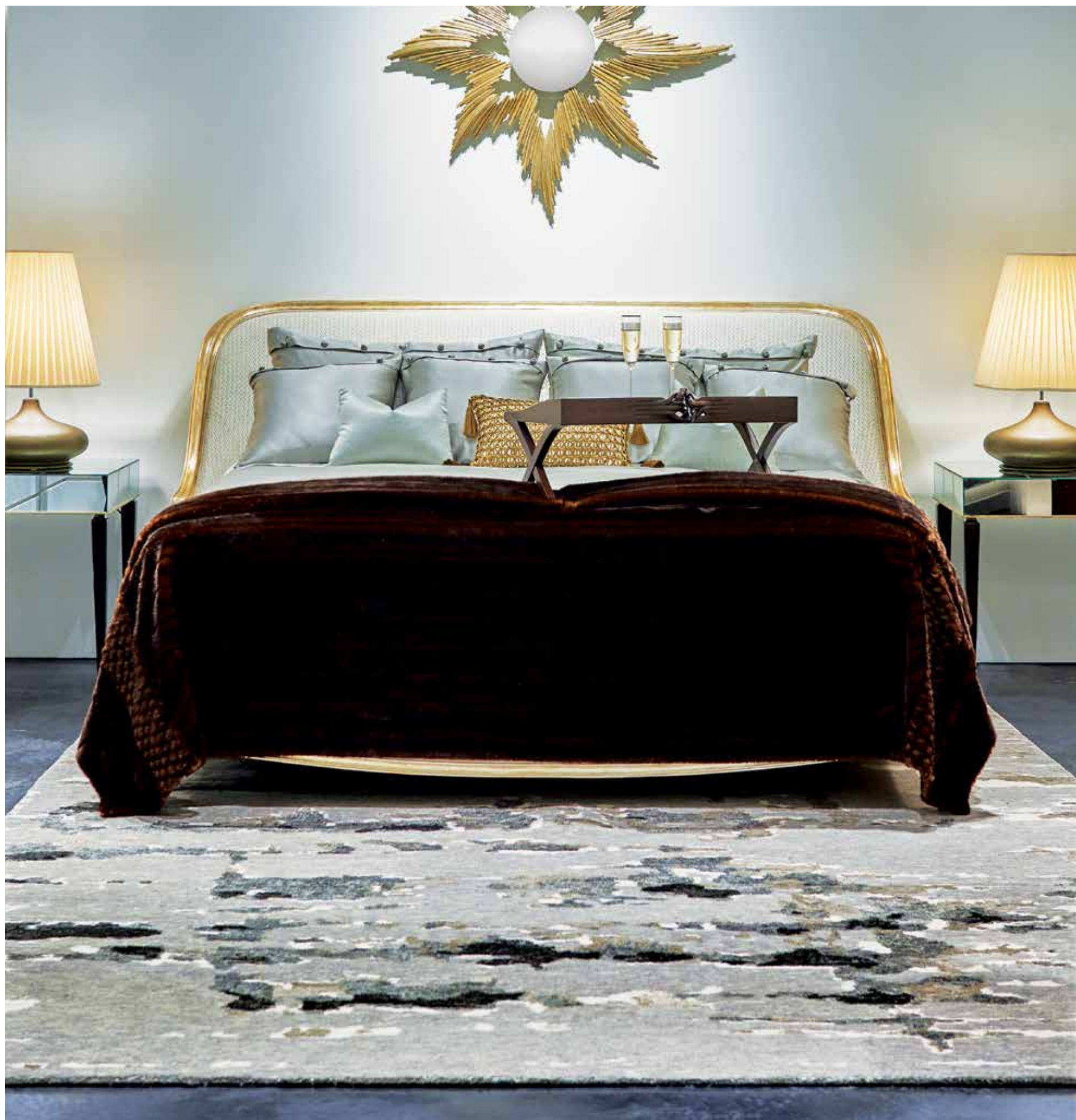
I first experimented with the look using a series of contemporary paint techniques on canvas, then digitally controlled the tones to create a subtle color scheme.

—CHRISTOPHER GUY













AQUARELLE MOCHA/CHIC GREY 47-0039 | CGW05 MOCHA  
NEW ZEALAND WOOL, BAMBOO SILK & LINEN | TIBETAN WEAVE, HAND KNOTTED

GROUP C





8FT ROUND AREA RUG

Deep mink and truffle  
detailing create a  
harmonious feel in this  
wool, bamboo silk, and  
linen blended rug.

NEW ZEALAND WOOL  
BAMBOO SILK & LINEN  
TIBETAN WEAVE  
HAND KNOTTED

AQUARELLE MOCHA/CHIC GREY  
47-0039 | CGW05 MOCHA

GROUP C















AQUARELLE NATURAL 47-0039 | CGW05 NATRL  
NEW ZEALAND WOOL, BAMBOO SILK & LINEN | TIBETAN WEAVE, HAND KNOTTED

GROUP C





8FT ROUND AREA RUG

Cool neutrals come to focus with grey and graphite detailing, punctuating the intricate design with bold details in this wool, bamboo silk, and linen blended rug.

NEW ZEALAND WOOL  
BAMBOO SILK & LINEN  
TIBETAN WEAVE  
HAND KNOTTED

AQUARELLE NATURAL  
47-0039 | CGW05 NATRL

GROUP C



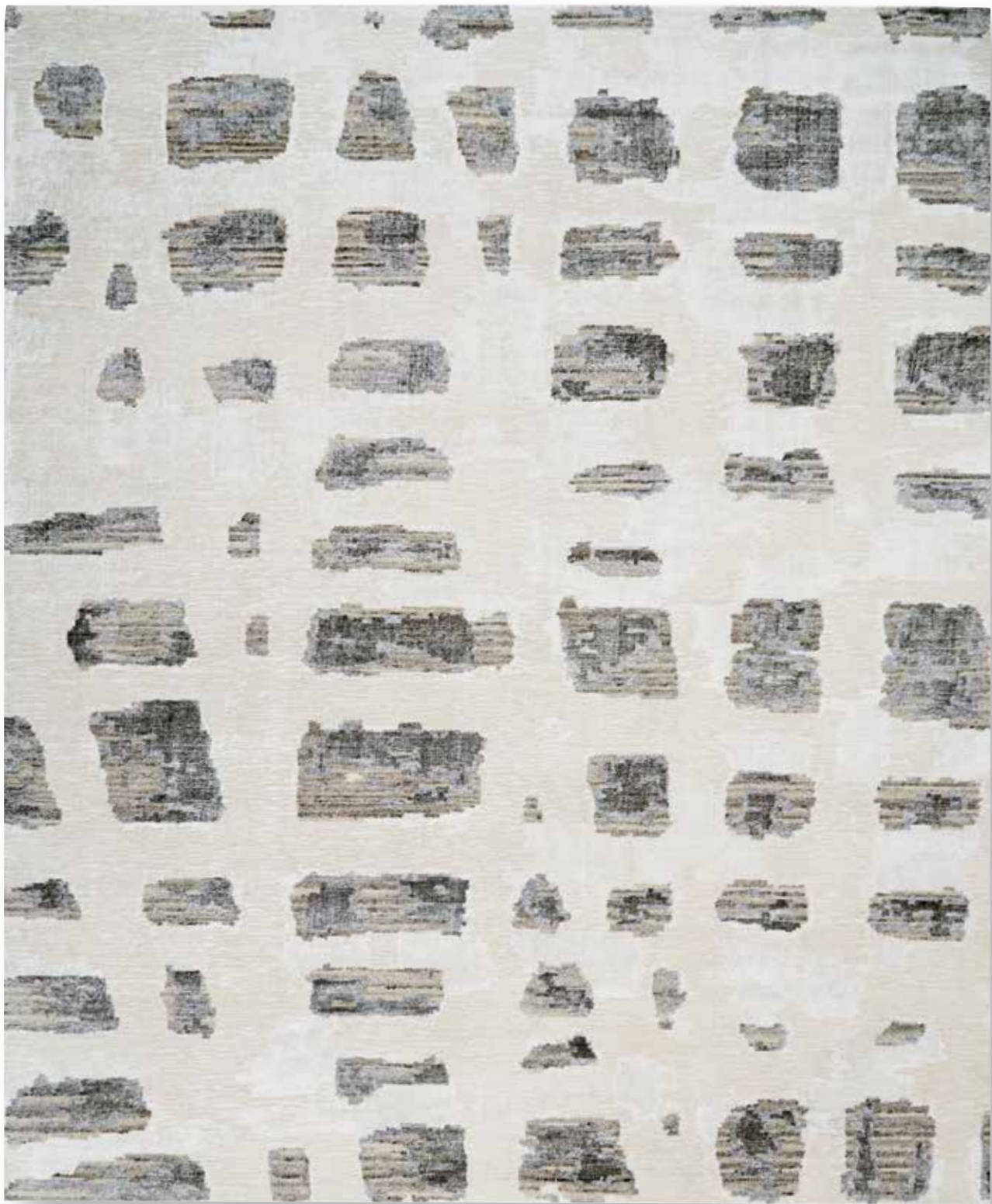








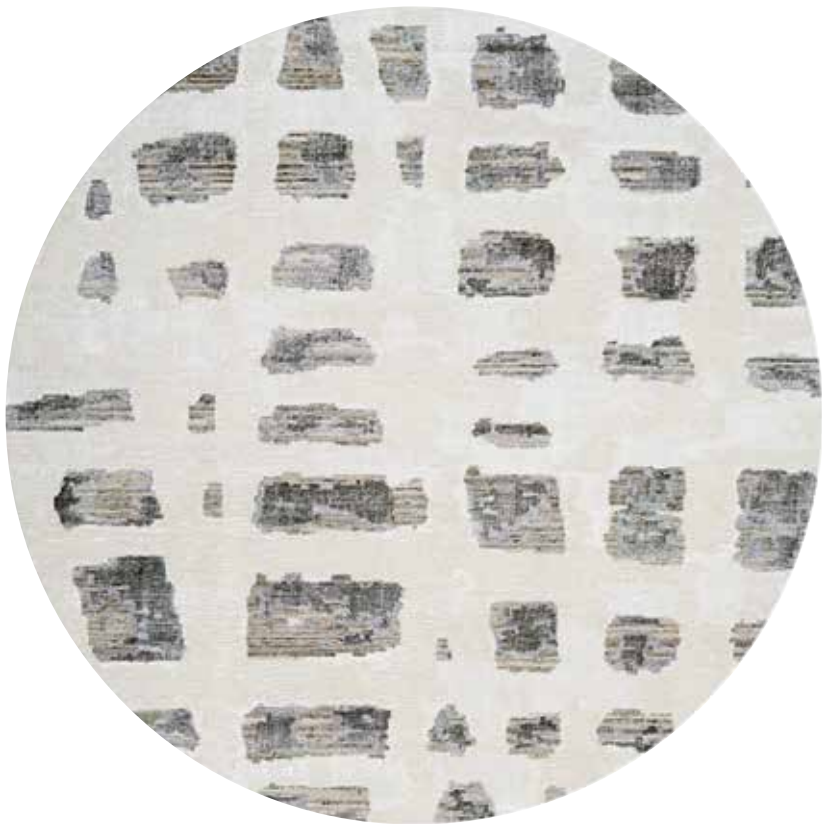




BAMBOU MARBLE WHITE/MISTED MORNING 47-0045 | CGW12 MARWT  
NEW ZEALAND WOOL, BAMBOO SILK & LINEN | TIBETAN WEAVE, HAND KNOTTED

GROUP C





8FT ROUND AREA RUG

Light natural tones  
with shades of gray  
create a broad woven  
effect in this bold  
patterned rug of wool,  
bamboo silk, and linen.

NEW ZEALAND WOOL  
BAMBOO SILK & LINEN  
TIBETAN WEAVE  
HAND KNOTTED

BAMBOU MARBLE WHITE/MISTED MORNING  
47-0045 | CGW12 MARWT

GROUP C









“

On a sub-zero day in Central Park, I was drawn by an engaging pattern formed in broken ice. Inspiration sometimes appears in the most curious of places...

—CHRISTOPHER GUY













**CHEMIN EGG SHELL/MISTED MORNING 47-0042 | CGW16 EGGSH**  
NEW ZEALAND WOOL, BAMBOO SILK & LINEN | TIBETAN WEAVE, HAND KNOTTED

GROUP C





8FT ROUND AREA RUG

Intricate warm shading adds a delicate balance and dimension to this angular design of wool, bamboo silk, and linen.

NEW ZEALAND WOOL  
BAMBOO SILK & LINEN  
TIBETAN WEAVE  
HAND KNOTTED

CHEMIN EGG SHELL/MISTED MORNING  
47-0042 | CGW16 EGGSH

GROUP C















CHEMIN SILVER 47-0042 | CGW16 SILVR  
NEW ZEALAND WOOL, BAMBOO SILK & LINEN | TIBETAN WEAVE, HAND KNOTTED

GROUP C





8FT ROUND AREA RUG

Silvery tones create a twilight-inspired mood in this sumptuous rug of wool, bamboo silk, and linen.

NEW ZEALAND WOOL  
BAMBOO SILK & LINEN  
TIBETAN WEAVE  
HAND KNOTTED

CHEMIN SILVER  
47-0042 | CGW16 SILVR

GROUP C









**LUXUEUX**  
47-0037 | CGM01

Undemanding to the eye, the neutral, monochromatic, luxury Mohair rug provides visual flexibility while maintaining an understated look.

**STANDARD SIZES**

|               |              |
|---------------|--------------|
| 8 ft x 10 ft  | 244 x 305 cm |
| 9 ft x 12 ft  | 274 x 366 cm |
| 10 ft x 14 ft | 305 x 427 cm |

**SPECIAL ORDER SIZES**

|                   |              |
|-------------------|--------------|
| 2 ft 3 in. x 3 ft | 69 x 91 cm   |
| 12 ft x 15 ft     | 366 x 457 cm |
| 12 ft x 18 ft     | 366 x 549 cm |
| 8 ft Square       | 244 cm       |
| 12 ft Square      | 366 cm       |

*Custom Sizes Available*







GROUP B



SHOWN: TAUPE





SHOWN: SAND











**CG**  
CHRISTOPHER GUY  
**PILLOWS**

- 152 | BEAUTICIOUS BEADS
- 153 | VELVETY & TEXTURAL
- 154 | PRECIOUS PEARLS
- 155 | LUXURIOUS LEATHER







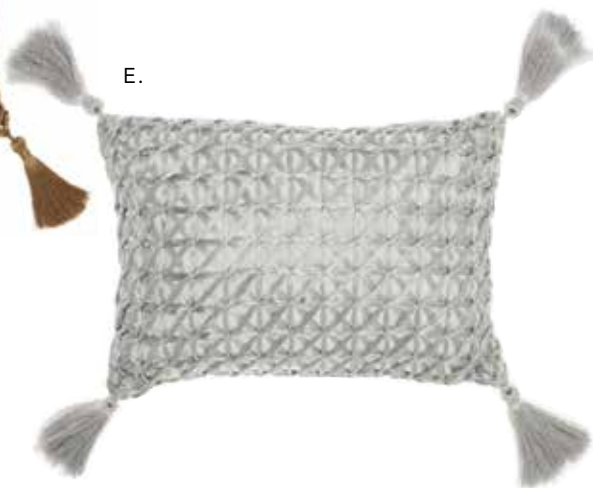
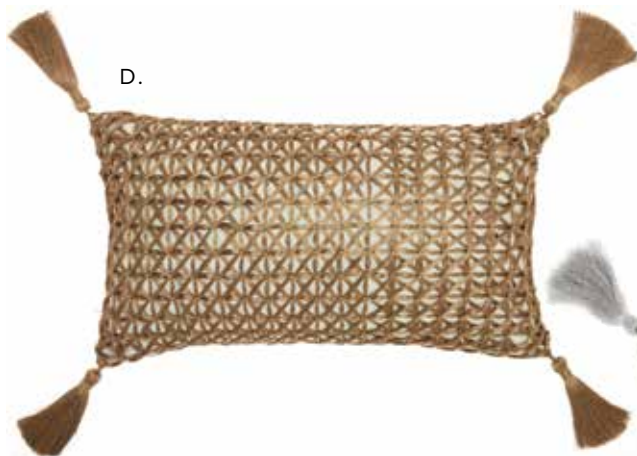
*BEAUTICIOUS*  
**BEADS**

- A. CGPLW E5500 PEWTR | 20" X 20"
- B. CGPLW E5500 SILVR | 20" X 20"
- C. CGPLW Z4473 IVORY | 20" X 20"
- D. CGPLW E0024 BLUSH | 18" X 18"
- E. CGPLW E0024 SILVR | 18" X 18"
- F. CGPLW E5570 PEWTR | 12" X 20"
- G. CGPLW E5570 SILVR | 12" X 20"





# VELVETY & **TEXTURAL**



- A. CGPLW HR020 IVORY | 14" X 20"
- B. CGPLW HR020 CHARC | 14" X 20"
- C. CGPLW HR020 AQUA | 14" X 20"
- D. CGPLW HR022 GOLD | 12" X 20"
- E. CGPLW HR022 SILVR | 12" X 20"
- F. CGPLW ST444 NATRL | 20" X 20"





*PRECIOUS*  
**PEARLS**

- A. CGPLW HR105 GREY | 20" X 20"
- B. CGPLW HR105 WHITE | 20" X 20"
- C. CGPLW E1199 CHARC | 18" X 18"
- D. CGPLW E1199 IVORY | 18" X 18"
- E. CGPLW NS991 IVORY | 12" X 20"







A.

B.



C.



D.

- A. CGPLW PD031 BLACK | 20" X 20"
- B. CGPLW PD031 WHITE | 20" X 20"
- C. CGPLW PD280 GREY | 20" X 20"
- D. CGPLW PD280 WHITE | 20" X 20"

LUXURIOUS  
LEATHER







**CG**

CHRISTOPHER GUY

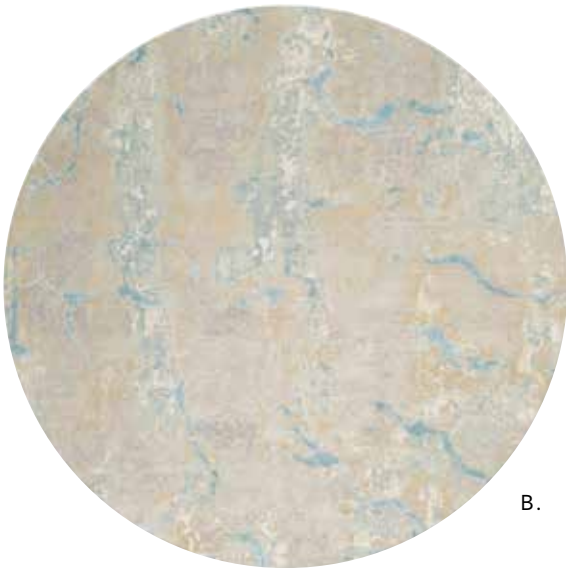
**ROUND  
AREA RUGS**



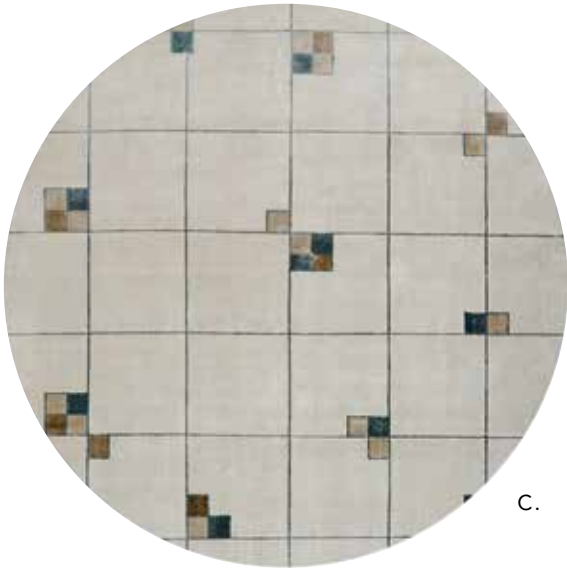




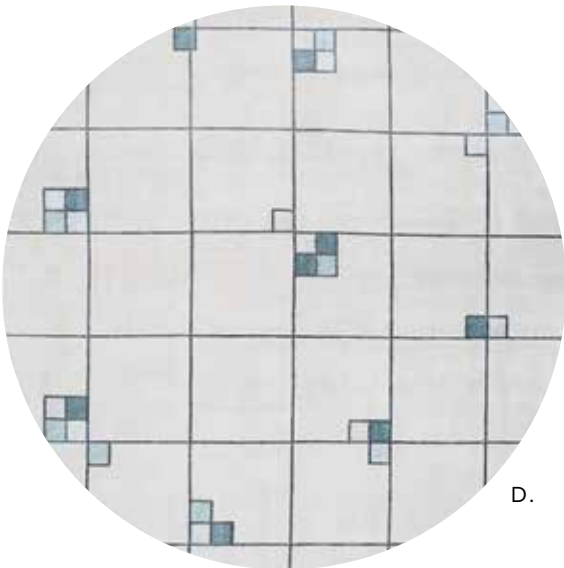
A.



B.



C.



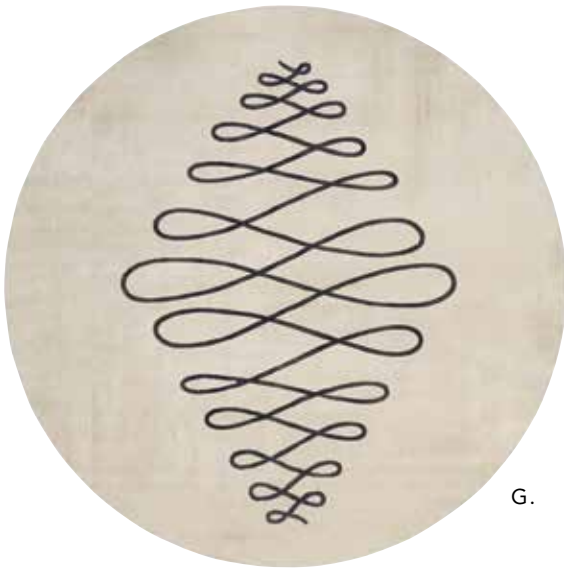
D.



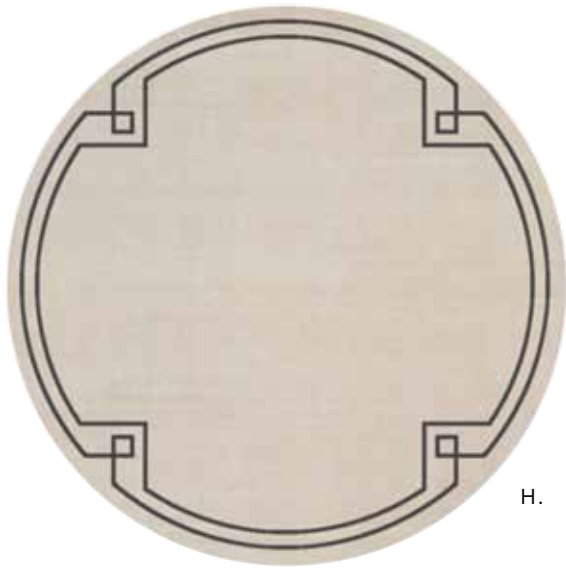
E.



F.



G.



H.

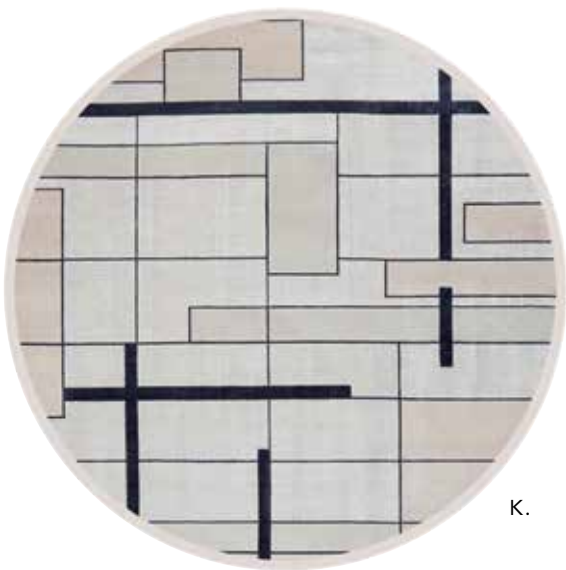


I.





J.



K.



L.



M.

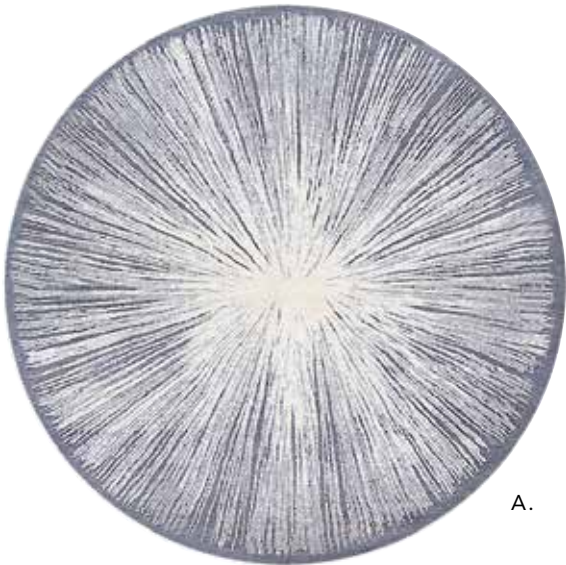


N.

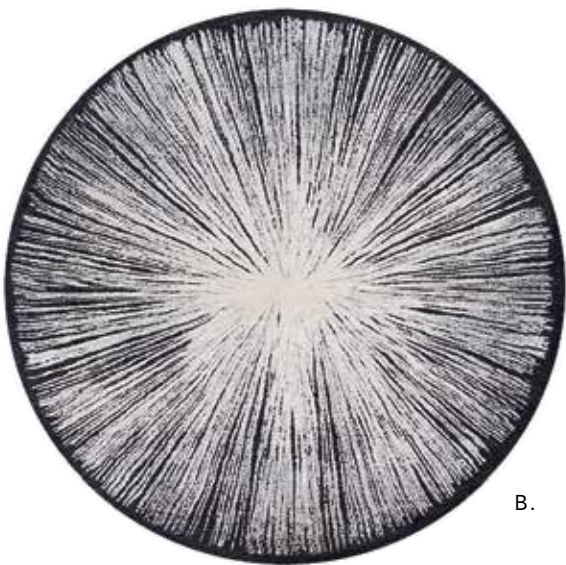
- |                |                |
|----------------|----------------|
| A. CGS01 AJMER | H. CGS10 MDSND |
| B. CGS01 MDSND | I. CGS11 SESND |
| C. CGS04 ECRU  | J. CGS18 MDSND |
| D. CGS04 MDSND | K. CGS19 SLVMN |
| E. CGS05 SHALE | L. CGS20 MDSND |
| F. CGS06 AJMER | M. CGS20 SNDSL |
| G. CGS09 SESND | N. CGS20 TOURM |

8 FT. ROUND





A.



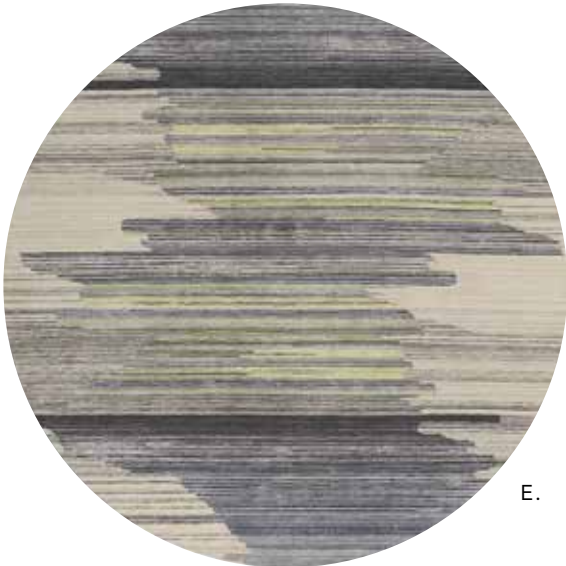
B.



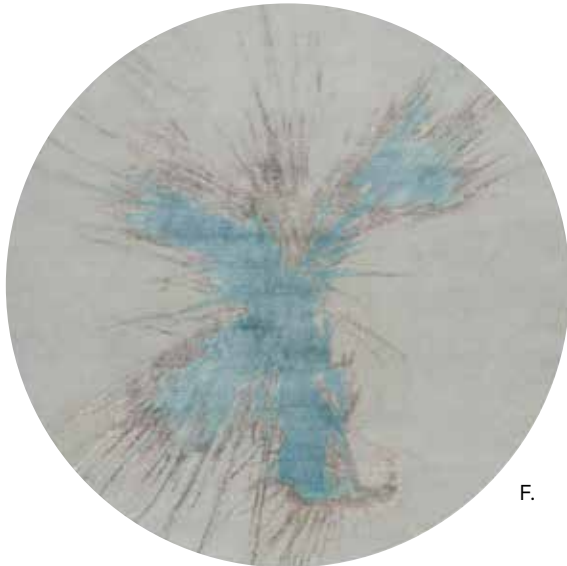
C.



D.



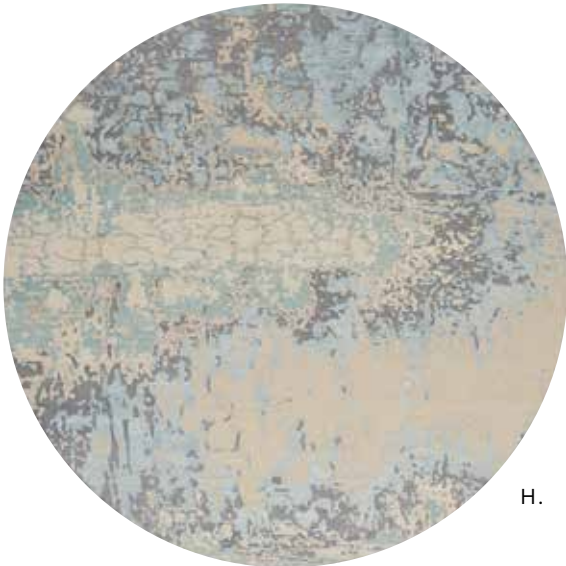
E.



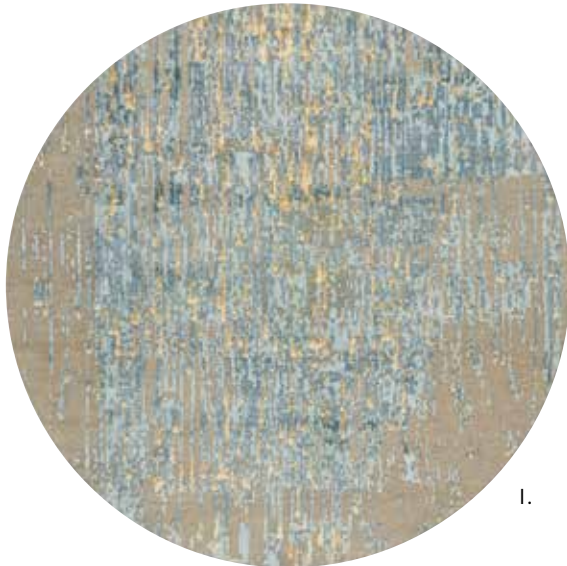
F.



G.

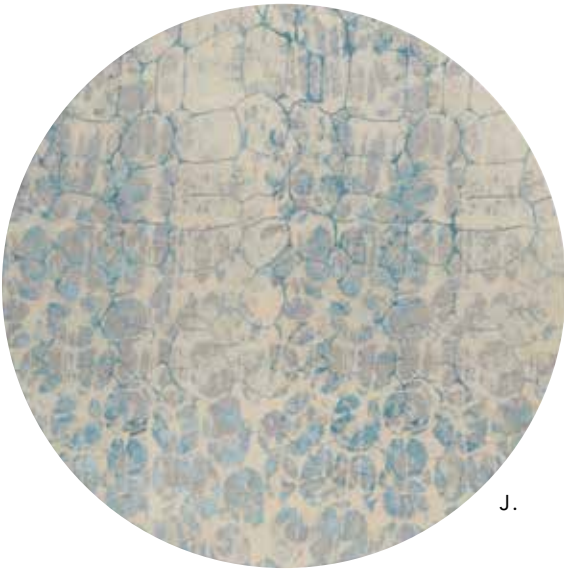


H.



I.

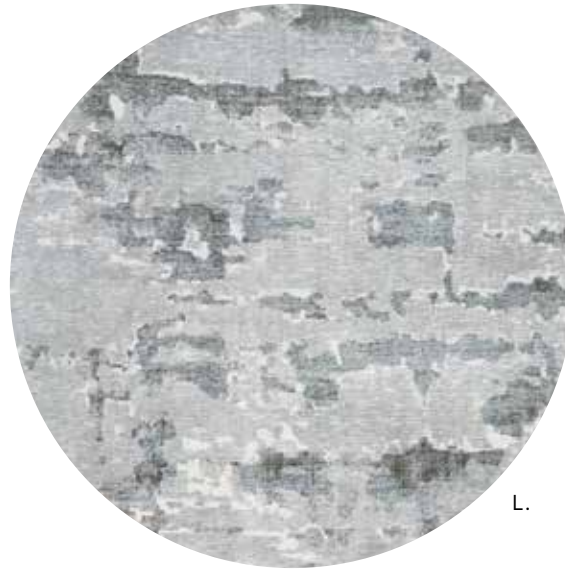




J.



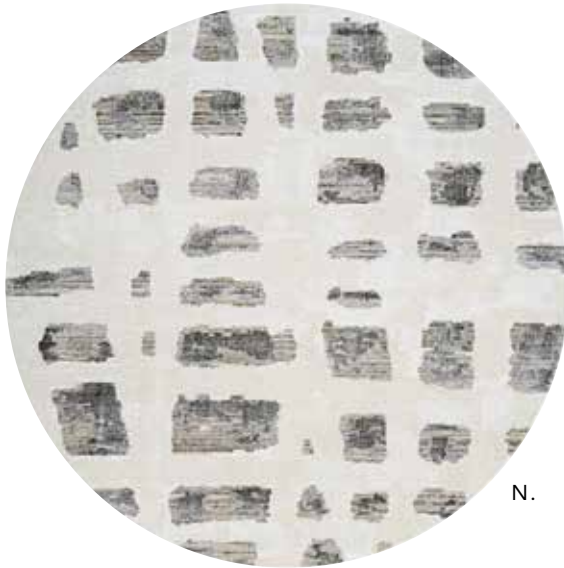
K.



L.



M.



N.



O.



P.

- |                |                |
|----------------|----------------|
| A. CGS21 CHGRY | I. CGS27 ZINC  |
| B. CGS21 NOIR  | J. CGS28 BIRCH |
| C. CGS22 CHGRY | K. CGS29 ASH   |
| D. CGS22 NOIR  | L. CGW05 MOCHA |
| E. CGS23 RUBIO | M. CGW05 NATRL |
| F. CGS24 PALOM | N. CGW12 MARWT |
| G. CGS25 BIRCH | O. CGW16 EGGSH |
| H. CGS26 CHGRY | P. CGW16 SILVR |

8 FT. ROUND



